

# Alphabet Race

## Monday 26 May 2025

### Sailing Instructions

[DP] before a rule indicates that penalty other than disqualification may be applied by the Race Committee.

[NP] Before a rule indicates that a boat may not protest another boat for breaking that rule. This changes RRS60.1

#### 1. RULES

1.1. The event is governed by the rules as defined in *The Racing Rules of Sailing 2025 - 2028*.

1.2. RRS Appendix T (Arbitration) applies

##### 1.3. SAIL NUMBERS

A boat shall not race with an incorrect sail number unless she has notified the office when entering. Even when such confirmation is received the Race Committee does not have the authority to amend the requirements of class rules. As a result, a boat could be protested for failing to comply with class rules.

1.4. Boats racing may accept refreshments from an official safety boat or Race Committee boat: this changes RRS 41.

#### 2. CHANGES TO SAILING INSTRUCTIONS

2.1. Any change to the sailing instructions will be posted no later than 0930 on Mon 26 May except that any change to the race schedule will be posted by 2000 on Sun 25 May.

#### 3. COMMUNICATIONS WITH COMPETITORS

3.1. Notices to competitors will be posted on the official notice board located at <https://www.grafham.org/club-noticeboard>

3.2. There will be a competitor briefing in the café at 0945

#### 4. CODE OF CONDUCT

4.1. [DP] Grafham Water Sailing Club implements the RYA Racing Charter and competitors will be expected to sail in compliance with it. The Charter can be found at the front of the RYA edition of the Racing Rules of Sailing (the yellow pages after the definitions), or on the RYA website at [www.rya.org.uk/racingrules](http://www.rya.org.uk/racingrules).

#### 5. SIGNALS MADE ASHORE

5.1. Signals made ashore will be displayed on flagpole 1.

#### 6. SCHEDULE OF RACES

6.1. There is a single race with starts (see below) from 1030.

#### 7. CLASS/FLEET FLAGS

7.1. No class or fleet flags will be used for starting signals.

#### 8. RACING AREA

8.1. The racing area will be the whole of the lake

#### 9. THE COURSE

9.1. The course is as described in the Appendix

#### 10. MARKS

10.1. Marks used will be the fixed marks as shown on the lake map

## **11. [DP] AREAS THAT ARE OBSTRUCTIONS**

11.1. The following areas are designated as obstructions:

- 11.1.1. The prohibited area at the West end of the water is an obstruction. Its boundary is a line of small yellow buoys forming its eastern boundary.
- 11.1.2. Each fishing boat, and an area extending 20 metres in any direction from the fishing boat is a prohibited area and an obstruction.
- 11.1.3. A safety boat in close attendance to a craft or competitor in difficulty is an obstruction and a prohibited area. Boats must not sail between the safety boat and the craft or competitor in difficulty.

## **12. THE START**

- 12.1. The starting line will be between the staffs of two dan buoys displaying orange flags situated offshore of the Clubhouse
- 12.2. The start will be "open" from approximately 1030 to 1130. To signify that the start is open an orange flag will be displayed (with multiple sound signals) from Flagpole 1 onshore. The orange flag will be removed to signify that the start line is closed.
- 12.3. Boats may start at anytime that the start is "open". A boat will be timed as starting when any part of her hull crosses the starting line from the pre-start side to the course side. This changes the RRS definition of start
- 12.4. Boats not about to start should keep clear of the start line. Boats should not pass through the start line from the course side to the pre-start side.

## **13. CHANGE OF THE NEXT LEG OF THE COURSE**

13.1 Marks will not be moved during a race.

## **14. THE FINISH**

- 14.1. The finish line will be between the staffs of two dan buoys displaying blue flags situated offshore of the Clubhouse
- 14.2. [DP] After finishing, boats shall keep clear of the finish line and of all boats that are continuing to race.
- 14.3. ALTERNATIVE FINISH LINES When a race committee boat displays flag W with two sounds, boats that have not yet rounded the nearby mark shall finish between this mark and the staff on the boat displaying flag W

## **15. PENALTY SYSTEM**

- 15.1. RRS 44.1 is changed so that the two turn penalty is replaced by a one turn penalty.
- 15.2. No boats need display a protest flag.
- 15.3. Rule 44.3 shall not apply.

## **16. TIME LIMITS**

16.1. n/a

## **17. HEARING REQUESTS**

- 17.1. The protest time limit is 45 minutes after the time of the last finisher
- 17.2. Hearing request forms are available from the race office.
- 17.3. Hearings may be held in person at the sailing club or online as soon as practical after the request. Notifications re portests and hearings will be posted on the Official Notice Board

## **18. SCORING**

- 18.1. Boats will be ranked on adjusted time using the Great Lakes Handicaps System
- 18.2. Boats completing the full course will be ranked separately to boats sailing a shortened course and finished in accordance with SI14.3 above.
- 18.3. The ranking of boats sailing a shortened course will take account of handicap, time sailed, and distance sailed

## **19. SAFETY REGULATIONS**

- 19.1. [DP] A boat that retires from a race should notify the office as soon as possible

## **20. REPLACEMENT OF CREW OR EQUIPMENT**

- 20.1. n/a

## **21. EQUIPMENT AND MEASUREMENT CHECKS**

- 21.1. Boats shall follow their class rules (unless granted a dispensation by the Race Committee). A boat or equipment may be inspected at any time for compliance with the relevant class rules, notice of race and sailing instructions.

## **22. SUPPLIED BOATS – Not used**

## **23. OFFICIAL VESSELS – Not used**

## **24. (DP) SUPPORT VESSELS**

- 24.1. Support vessels shall not be allowed.

## **25. TRASH DISPOSAL**

- 25.1. Trash must be taken ashore and may not be placed aboard official vessels.

## **26. BERTHING-Not used**

## **27. HAUL OUT RESTRICTIONS – Not used**

## **28. DIVING EQUIPMENT AND PLASTIC POOLS – Not used**

## **29. PRIZES**

- 29.1. Prizes will be given as stated in the NoR.

## **30. RISK STATEMENT**

Rule 3 of the Racing Rules of Sailing states: 'The responsibility for a boat's decision to participate in a race or to continue racing is hers alone.'

Sailing is by its nature an unpredictable sport and therefore inherently involves an element of risk. By taking part in the event, each competitor agrees and acknowledges that:

- (a) They are aware of the inherent element of risk involved in the sport and accept responsibility for the exposure of themselves, their crew and their boat to such inherent risk whilst taking part in the event;
- (b) They are responsible for the safety of themselves, their crew, their boat and their other property whether afloat or ashore;
- (c) They accept responsibility for any injury, damage or loss to the extent caused by their own actions or omissions;
- (d) Their boat is in good order, equipped to sail in the event and they are fit to participate;
- (e) The provision of a race management team, patrol boats and other officials and volunteers by the event organizer does not relieve them of their own responsibilities;
- (f) The provision of patrol boat cover is limited to such assistance, particularly in extreme weather conditions, as can be practically provided in the circumstances;
- (g) It is their responsibility to familiarise themselves with any risks specific to this venue or this event drawn to their attention in any rules and information produced for the venue or event and to attend any safety briefing held for the event.

## **31. INSURANCE**

- 31.1. Each participating boat shall be insured with valid third-party liability insurance with a minimum cover of £2 million per incident or the equivalent.

## The Course

The table below shows the marks to be rounded, the order of rounding and the direction of rounding.  
All Marks are *Rounding Marks* as per RRS definitions

Mark Letter	Mark Name	Mark to be left to
A	Alphabet	Port
B	Baker	Port
C	Club	Port
D	Diddington	Starboard
E	East Perry	Starboard
F	Fastnet	Starboard
G	Grafham	Port
H	Halfway	Port
I	Inlet	Starboard
J		Starboard
K	King	Starboard
L	Lymage	Starboard
M	Middle	Starboard
N	Norris	Port
P	Pylon	Port
Q	Queen	Starboard
R	Rose	Port
S	Savage	Port
T	Tower	Starboard
W	Waghorn	Port
X		Port
Y		Starboard
Z		Starboard

As an aid to competitors, it is intended that red/green flags will be displayed on each mark to indicate the direction of rounding viz:

Red flag     Mark left to Port

Green Flag   Mark left to Starboard

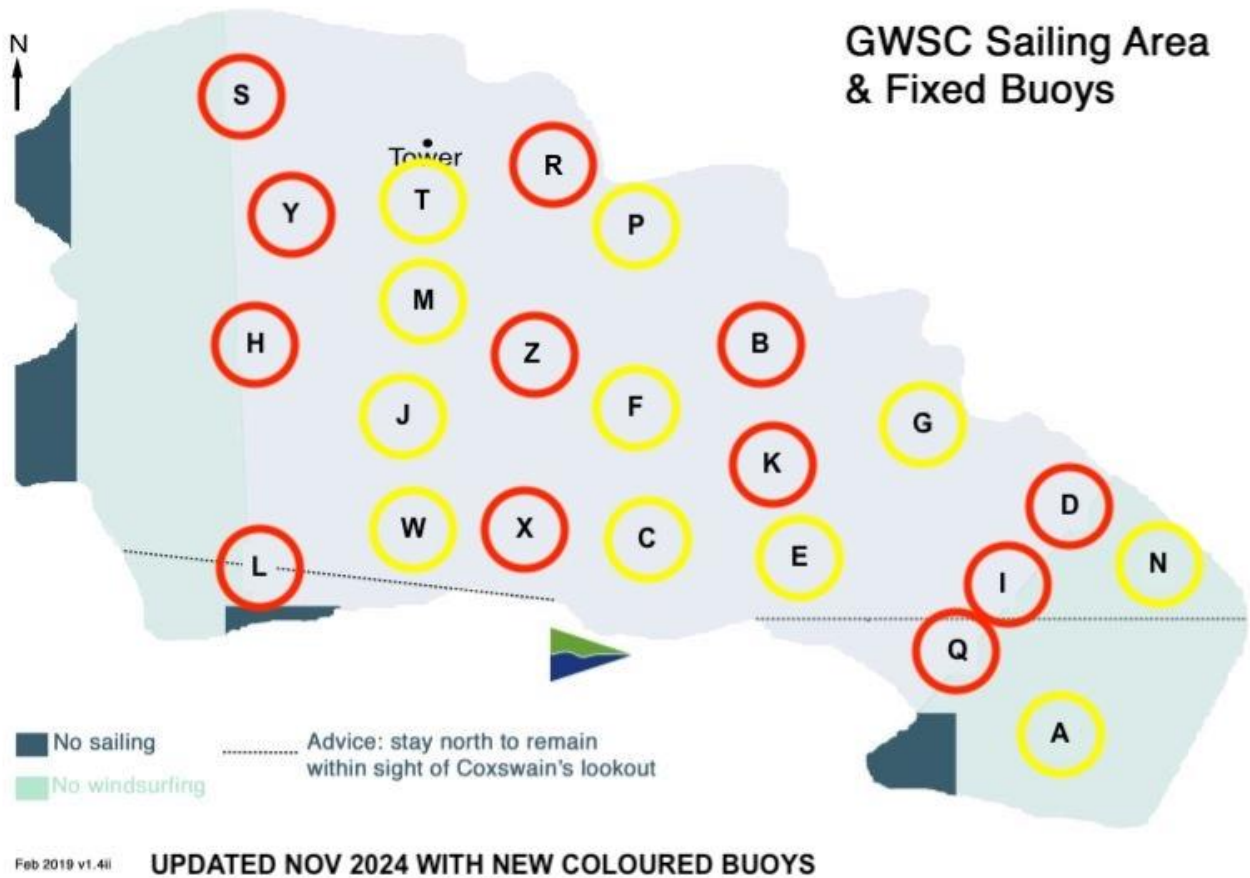
The failure to display flags will not be grounds for redress under RRS 61.4(b)

## Further Course details

The total length of the course is approx. 34km

The information below is given for assistance in course navigation

### Lake Map



Charts of bearings and distances between mark pairs

Bearings between marks																								from LH axis to Top axis										April 2025	
	A	B	C	D	E	F	G	H	I	J	K	L	M	N	P	Q	R	S	T	W	X	Y	Z												
A		328	300	003	306	312	341	299	344	299	317	285	309	025	325	311	323	312	317	291	296	311	310												
B	148		209	124	178	241	122	268	141	255	179	245	277	125	315	154	314	298	302	239	228	291	270												
C	120	029		088	106	354	069	298	101	298	062	267	321	095	000	116	349	322	334	271	275	322	329												
D	183	304	268		260	286	307	283	218	280	280	267	291	127	308	218	309	300	303	269	270	297	290												
E	126	358	286	080		321	048	295	097	294	357	272	311	091	341	122	335	316	324	277	281	314	314												
F	132	061	174	106	141		096	279	119	265	120	246	301	110	005	132	346	313	326	237	215	309	301												
G	161	302	249	127	228	276		278	160	271	255	259	286	127	308	178	309	299	302	259	256	294	283												
H	119	088	118	103	115	099	098		108	118	105	182	070	106	070	117	054	358	038	142	126	025	088												
I	164	321	281	038	277	299	340	288		289	299	273	300	082	319	215	318	307	311	277	279	304	300												
J	119	075	118	100	114	085	091	298	109		099	227	007	103	047	117	027	337	005	178	133	345	051												
K	137	359	242	100	177	300	075	285	119	279		260	300	106	336	140	330	310	318	260	257	306	300												
L	105	065	087	087	092	066	079	002	093	047	080		031	091	047	100	035	360	022	080	083	355	048												
M	129	097	141	111	131	121	106	250	120	187	120	211		113	070	128	040	323	003	183	158	324	120												
N	205	305	275	307	271	290	307	286	262	283	286	271	293		308	244	308	301	304	274	275	298	292												
P	145	135	180	128	161	185	128	250	139	227	156	227	250	128		148	313	291	293	214	199	277	224												
Q	131	334	296	038	302	312	358	297	035	297	320	280	308	064	328		326	313	318	286	291	311	310												
R	143	134	169	129	155	166	129	234	138	207	150	215	220	128	133	146		283	274	199	184	259	191												
S	132	118	142	120	136	133	119	178	127	157	130	180	143	121	111	133	103		109	162	150	141	137												
T	137	122	154	123	144	146	122	218	131	185	138	202	183	124	113	138	094	289		183	167	242	160												
W	111	059	091	089	097	057	079	322	097	358	080	260	003	094	034	106	019	342	003		088	349	027												
X	116	048	095	090	101	035	076	306	099	313	077	263	338	095	019	111	004	330	347	268		333	356												
Y	131	111	142	117	134	129	114	205	124	165	126	175	144	118	097	131	079	321	062	169	153		134												
Z	130	090	149	110	134	121	103	268	120	231	120	228	300	112	044	130	011	317	340	207	176	314													

A																							
B	1739	B																					
C	1528	802	C																				
D	813	1172	1362	D																			
E	1116	819	430	961	E																		
F	1840	501	462	1470	740	F																	
G	1188	647	1004	526	707	993	G																
H	2896	1599	1369	2638	1792	1173	2165	H															
I	584	1182	1161	333	734	1367	604	2500	I														
J	2364	1168	836	2127	1260	691	1676	533	1974	J													
K	1344	493	448	979	327	512	562	1662	855	1149	K												
L	2650	1803	1239	2601	1651	1302	2217	720	2382	685	1657	L											
M	2566	1081	1078	2191	1452	736	1689	559	2103	445	1248	1066	M										
N	687	1484	1616	312	1196	1765	838	2926	473	2408	1263	2847	2477	N									
P	2273	544	1086	1710	1272	629	1184	1291	1725	1015	961	1700	732	2022	P								
Q	469	1297	1070	643	650	1371	820	2438	306	1905	879	2235	2097	719	1822	Q							
R	2635	913	1362	2077	1605	903	1551	1169	2092	1053	1308	1713	651	2389	369	2179	R						
S	3465	1846	1997	3014	2360	1626	2492	922	2972	1275	2127	1640	919	3324	1336	2996	1002	S					
T	2901	1232	1507	2404	1821	1083	1879	907	2384	970	1557	1550	525	2715	711	2435	386	625	T				
W	2192	1308	726	2087	1147	808	1698	790	1881	376	1138	520	819	2341	1294	1757	1396	1631	1344	W			
X	1851	999	350	1710	777	525	1328	1056	1510	533	768	894	872	1967	1115	1403	1309	1776	1364	377	X		
Y	3008	1433	1533	2587	1899	1169	2070	614	2526	836	1675	1283	455	2894	965	2539	700	464	340	1206	1318	Y	
Z	2242	763	780	1868	1132	408	1373	810	1775	437	920	1122	328	2167	580	1773	679	1229	734	730	643	768	Z
A B C D E F G H I J K L M N P Q R S T W X Y Z																							