



Sailing Instructions

Wednesday Evening Pursuit Race

Wednesday 3 September 2025

The course will be published by 1730 on Wednesday evening (see App1 pt4).

There will be no formal competitor briefing but the Race Officer will be available in the café between 1700 and 1730 on Wednesday afternoon to answer any questions [DP] before a rule indicates that a penalty other than disqualification may be applied by the Race Committee.

[NP] Before a rule indicates that a boat may not protest another boat for breaking that rule. This changes RRS60.1

1. RULES

1.1 The event is governed by the rules as defined in *The Racing Rules of Sailing 2025-2028*

1.2 SAIL NUMBERS A boat shall not race with an incorrect sail number unless she has notified the office when entering. Even when such confirmation is received the Race Committee does not have the authority to amend the requirements of class rules. As a result, a boat could be protested for failing to comply with class rules.

2. CHANGES TO SAILING INSTRUCTIONS

2.1 Any change to the sailing instructions will be posted no later than 1700 on the day it will take effect, except that any change to the schedule of races will be posted by 2000 on the day before it will take effect.

3. COMMUNICATIONS WITH COMPETITORS

3.1 Notices to competitors will be posted on the official notice board located at [Club Noticeboard | Grafham Water Sailing Club](#)

3.2 From the first warning signal until the end of the race, except in an emergency, a boat shall not make voice or data transmissions and shall not receive voice or data communication that is not available to all boats.

4. CODE OF CONDUCT

4.1 [DP] Grafham Water Sailing Club implements the RYA Racing Charter and competitors will be expected to sail in compliance with it. The Charter can be found at the front of the RYA edition of the Racing Rules of Sailing (the yellow pages after the definitions), or on the RYA website at www.rya.org.uk/racingrules.

5. SIGNALS MADE ASHORE

5.1 Signals made ashore will be displayed on flagpole 1. Signals may be announced on the tannoy as well.

5.2 When flag AP is displayed ashore '1 minute' is replaced with 'not less than 30 minutes' in the Race Signal AP.

6. SCHEDULE OF RACES

6.1 The warning signal (3 minutes) for the first start (RS Tera Sport) is scheduled to be at 1800



6.2 To alert boats that a race or sequence of races will begin soon, the orange starting line flag will be displayed with multiple sound signals at least one minute before the first warning signal is made

7. CLASS FLAGS

7.1 No class or fleet flags will be used for starting signals

8. RACING AREA

8.1 The racing area will be defined by the fixed buoys used for the Course. The start is expected to be within the triangle delineated by Fastnet, X, and Club buoys.

9. COURSES

See Appendix 1

10. MARKS

10.1 Marks used will be the fixed marks as shown on the [lake map](#) and in Appendix 1

11. [DP] OBSTRUCTIONS

11.1 The prohibited area at the West end of the water is an obstruction. Its boundary is a line of small yellow buoys forming its eastern boundary.

11.2 Each fishing boat, and an area extending 20 metres in any direction from the fishing boat is a prohibited area and an obstruction.

11.3 A safety boat in close attendance to a craft or competitor in difficulty is an obstruction and a prohibited area. Boats must not sail between the safety boat and the craft or competitor in difficulty.

12. THE START

12.1 The starting line will be between the mast on the Committee boat displaying an orange flag and a Dan buoy displaying an orange flag.

12.2 Starts will be indicated by a number displayed on boards on the committee boat. These will be changed with a sound signal every minute until 1850 or for as long as there are starters in the starting area.

12.3 The starting signal is the sound signal and not the number board. This changes RRS 26.

12.3 The scheduled start times for classes are as listed in Appendix 2.

12.4 [DP] The Warning Signal for each class is deemed to be 3 minutes before its Starting Signal, and the Preparatory Signal deemed to be 2 minutes before the Starting Signal. (this changes RRS 26). Boats whose warning signal has not been made shall keep clear of the starting area.

12.5 Individual recalls will be signalled by displaying flag X with one sound signal as detailed in RRS29, except that the flag will be removed on the next sound signal.

13. CHANGE OF THE NEXT LEG OF THE COURSE (Does not apply)

14. THE FINISH

14.1 The Race ends at 1920 (or 80 minutes after the initial warning signal if later). Finish ranking is the order of boats on the water at that time.

14.2 Near the end of the race boats should keep within 50 metres of the centreline of their sailing leg to make sure they receive a finish, especially if beating or tacking downwind.



14.3 Note the boats next in front and behind you at the finish time and continue sailing until your finish has been recorded from a RIB or Committee boat. After the finish time do not change order with boats ahead or behind you until your finish has been so recorded.

15. PENALTY SYSTEM

15.1 For all competitors RRS 44.1 is changed so that the Two-Turns Penalty is replaced by the One-Turn Penalty.

15.2 No boat need display a protest flag

16. TIME LIMITS

16.1 The target finishing time is 1920, (or 80 minutes after the initial warning signal if later)

17. HEARING REQUESTS

17.1 The protest time limit is 45 minutes after the last boat finishes the race.

17.2 Hearing request forms are available from the club office.

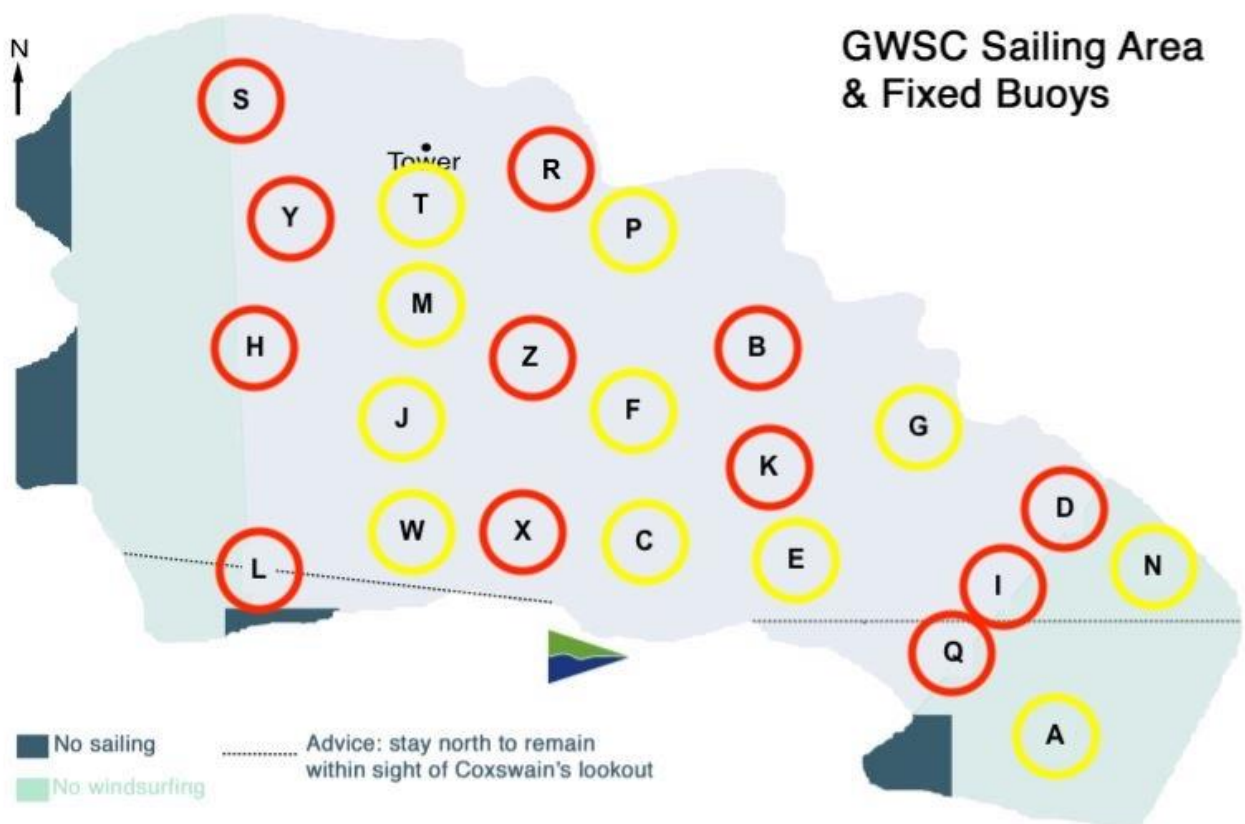
17.3 Hearings will be held as soon after the conclusion of racing as is possible

17.4 Arbitration: RRS Appendix T will apply



Course

- 1 The course will be chosen depending on the wind direction and strength.
- 2 The Course will use the Club's fixed marks as shown on the map below and on the Club's Lake Map
- 3 Marks will be listed in order with rounding direction (p-port, s-starboard).
- 4 The Course will be announced by 1730 on the afternoon of the race and displayed in the Café, and on the online noticeboard
- 5 As an aid to competitors, it is intended that red/green flags will be displayed on each mark to indicate the direction of rounding viz:
Red flag Mark left to Port
Green Flag Mark left to Starboard
The failure to display flags will not be grounds for redress under RRS 61.4(b)
- 6 After rounding the final mark in the Course sequence continue to the first mark in the sequence again and sail marks in the order listed until the race ends **AND** you are finished on the water.
- 7 Boats must not pass through the starting line when sailing in a downwind direction
- 8 Boats which fail to start or finish correctly or to sail the course as set and thus fail to comply with RRS28 may be disqualified without protest or a hearing



Feb 2019 v1.4ii

UPDATED NOV 2024 WITH NEW COLOURED BUOYS



Appendix 2

Start Times

For each class, the start is when the start number shown below is displayed on the Committee Boat

Class	Great Lakes Handicap	Start Time	Start Number
RS Tera Sport	1445	18:03	3
Topper 4.2	1425	18:04	4
Mirror - singlehanded	1375	18:07	7
RS Tera Pro	1370	18:07	7
Topper	1369	18:07	7
Mirror	1368	18:07	7
Heron	1345	18:08	8
Laser Pico Race	1330	18:09	9
Fusion Pro	1290	18:11	11
Hartley 12 Racer	1290	18:11	11
RS Feva	1280	18:12	12
Fusion Pro Spinnaker	1275	18:12	12
Otter	1275	18:12	12
Fleetwind	1268	18:12	12
Signet	1265	18:13	13
RS Zest	1260	18:13	13
Topaz Uno	1251	18:13	13
Vagabond	1248	18:14	14
Splash	1247	18:14	14
RS Feva XL	1244	18:14	14
2.4 mR	1230	18:14	14
Sunfish	1229	18:15	15
Yachting World Dayboat	1215	18:15	15
ILCA 4 / Laser 4.7	1212	18:15	15
Comet	1208	18:16	16
Byte	1205	18:16	16
Wanderer	1201	18:16	16
Bosun	1198	18:16	16
Miracle	1196	18:16	16
Pacer	1193	18:16	16
Firefly	1190	18:17	17
Topaz Duo	1190	18:17	17
Topaz Vibe	1185	18:17	17
Devon Yawl	1184	18:17	17
RS Neo	1180	18:17	17



Grafham Water Sailing Club

Class	Great Lakes Handicap	Start Time	Start Number
Topaz Magno	1175	18:17	17
Challenger	1171	18:18	18
Comet Duo	1168	18:18	18
Lightning 368	1168	18:18	18
British Moth	1165	18:18	18
Comet Versa	1165	18:18	18
Streaker	1155	18:18	18
Enterprise	1152	18:19	19
Byte CII	1149	18:19	19
ILCA 6 / Laser Radial	1149	18:19	19
Solo	1149	18:19	19
Europe	1147	18:19	19
RS Aero 5	1145	18:19	19
Dart 12	1144	18:19	19
Yeoman	1140	18:19	19
GP14	1138	18:19	19
Graduate	1132	18:20	20
RS Quest	1130	18:20	20
RS Vision	1130	18:20	20
Leader	1115	18:21	21
OK	1115	18:21	21
RS Venture S	1110	18:21	21
Snipe	1110	18:21	21
Wayfarer	1109	18:21	21
Solution	1108	18:21	21
RS Aero 6	1105	18:21	21
ILCA 7 / Laser	1104	18:21	21
Laser Stratos	1103	18:21	21
Flash	1101	18:21	21
Laser II	1100	18:21	21
Comet Trio MK 1	1096	18:22	22
2000	1095	18:22	22
Laser Bahia	1095	18:22	22
Topaz Argo	1095	18:22	22
Redwing	1094	18:22	22
Laser 3000	1090	18:22	22
Hobie 405	1089	18:22	22
Topaz Xenon	1085	18:22	22
RS Vaneo	1084	18:22	22
420	1080	18:22	22



Grafham Water Sailing Club

Class	Great Lakes Handicap	Start Time	Start Number
Devoti D-Zero Blue	1079	18:23	23
Seafly	1077	18:23	23
Supernova	1075	18:23	23
Topaz Omega	1075	18:23	23
Laser Vago XD	1074	18:23	23
Laser Vago XD - singlehanded	1074	18:23	23
Lark	1070	18:23	23
National 12	1070	18:23	23
RS Aero 7	1068	18:23	23
Blaze Fire	1065	18:23	23
Farr 3.7	1063	18:23	23
K1	1060	18:24	24
Megabyte	1060	18:24	24
Skud 18	1060	18:24	24
Devoti D-Zero Black	1056	18:24	24
Sport 14	1055	18:24	24
Albacore	1053	18:24	24
Comet Trio MK 2	1053	18:24	24
RS200	1050	18:24	24
Finn	1049	18:24	24
Hadron H2	1045	18:24	24
Devoti D-Zero	1043	18:24	24
Kestrel	1042	18:24	24
Marauder	1042	18:24	24
Blaze	1040	18:25	25
Sport 16	1040	18:25	25
Flying Fifteen Silver (2701-3400)	1036	18:25	25
Rooster 8.1	1035	18:25	25
Scorpion	1035	18:25	25
RS100 7.4	1034	18:25	25
Laser EPS	1033	18:25	25
Buzz	1030	18:25	25
Hartley Zenith	1030	18:25	25
K2	1030	18:25	25
RS Aero 9	1024	18:25	25
Flying Fifteen	1022	18:26	26
Tasar	1022	18:26	26
MX-Ray	1020	18:26	26
V3000	1007	18:26	26
RS100 8.4	1001	18:27	27
Skeeta 8.5 - no foils	1000	18:27	27



Grafham Water Sailing Club

Class	Great Lakes Handicap	Start Time	Start Number
Phantom	998	18:27	27
Melges 15	993	18:27	27
Topaz 14C	993	18:27	27
Blaze Halo	992	18:27	27
RS300	985	18:28	28
Merlin Rocket	983	18:28	28
MRX	983	18:28	28
RS100 10.2	981	18:28	28
International Moth - no foils	980	18:28	28
Icon	976	18:28	28
470	973	18:28	28
Vortex - no spinnaker	972	18:28	28
Cherub - 1997 Class Rules	970	18:28	28
Contender	969	18:28	28
Devoti D-One	965	18:29	29
RS500	963	18:29	29
Hobie Dragoon	961	18:29	29
Weta	960	18:29	29
Fireball	959	18:29	29
National 18 - Ultimate	957	18:29	29
Topaz 16S	956	18:29	29
Hornet	955	18:29	29
Vortex	950	18:29	29
RS400	948	18:29	29
RS Cat 16 Club - singlehanded	944	18:30	30
Javelin	941	18:30	30
Sonar	940	18:30	30
Topaz 14CX	940	18:30	30
ISO	934	18:30	30
Osprey	932	18:30	30
Spice	930	18:30	30
4000	927	18:31	31
RS Cat 16 S - doublehanded	926	18:31	31
Dart 15	924	18:31	31
VX Two	922	18:31	31
AltO	921	18:31	31
RS600	921	18:31	31
Dart 15 - doublehanded	919	18:31	31
Prindle 15	912	18:31	31
SB20	911	18:31	31
K6	910	18:32	32



Grafham Water Sailing Club

Class	Great Lakes Handicap	Start Time	Start Number
National 18	906	18:32	32
Topaz 16C	906	18:32	32
59er	905	18:32	32
Dart 16	905	18:32	32
International Canoe One Design	905	18:32	32
Cherub	903	18:32	32
Aigos	900	18:32	32
Catapult	898	18:32	32
29er	895	18:32	32
Topaz 16S - spinnaker	894	18:32	32
Dart 15 Sport	892	18:32	32
505	890	18:33	33
Flying Dutchman	890	18:33	33
Topper Breeze	890	18:33	33
59er XX	887	18:33	33
Norfolk Punt Hardchine	884	18:33	33
Topaz 14Xtreme - doublehanded	875	18:33	33
Topaz 14Xtreme - singlehanded	875	18:33	33
RS Cat 16 XL - doublehanded spinnaker	872	18:34	34
Thames A Rater	860	18:34	34
VX One	860	18:34	34
B14	858	18:34	34
Topaz 16CX	856	18:34	34
Dart 16 - doublehanded spinnaker	850	18:35	35
Nacra 500 - singlehanded	850	18:35	35
Boss	847	18:35	35
International Canoe	847	18:35	35
Laser 5000	846	18:35	35
DX Catamaran	845	18:35	35
RS700	845	18:35	35
Norfolk Punt	844	18:35	35
International Canoe Asymmetric	840	18:35	35
Musto Skiff	834	18:36	36
Hobie 16	826	18:36	36
Hobie 17	826	18:36	36
Dart 18 - singlehanded	821	18:36	36
Nacra Inter 17	814	18:37	37
Unicorn	812	18:37	37
Dart 18	810	18:37	37
Nacra 500 School - doublehanded	808	18:37	37
Shearwater	807	18:37	37



Grafham Water Sailing Club

Class	Great Lakes Handicap	Start Time	Start Number
Cherub - Foiling	800	18:37	37
RS800	799	18:37	37
Prindle 18	793	18:38	38
Nacra 500 - singlehanded spinnaker	792	18:38	38
Hobie 16 - spinnaker	780	18:38	38
SL16	774	18:39	39
Skeeta 8.5	770	18:39	39
Nacra 500 Sport - doublehanded spinnaker	761	18:39	39
Shadow	760	18:40	40
Hurricane 500	753	18:40	40
Nacra Inter 17 - spinnaker	751	18:40	40
International 14	750	18:40	40
Shadow X	750	18:40	40
UFO	750	18:40	40
Waszp	750	18:40	40
Nacra 15	749	18:40	40
49er Old rig	740	18:41	41
Spitfire - singlehanded	740	18:41	41
Nacra 16 straight foils - singlehanded spinnaker	723	18:41	41
49er FX	720	18:42	42
Spitfire	719	18:42	42
Hurricane 5.9	717	18:42	42
Tornado - Classic	715	18:42	42
Prindle 18.2 - spinnaker	714	18:42	42
Formula 16 - singlehanded	712	18:42	42
Nacra 16 straight foils - doublehanded spinnaker	711	18:42	42
Nacra 16 curved foils - singlehanded spinnaker	708	18:42	42
Formula 16 - doublehanded	703	18:43	43
49er	697	18:43	43
Nacra 16 curved foils - doublehanded spinnaker	697	18:43	43
A Class Classic	695	18:43	43
Hurricane 5.9 SX	691	18:43	43
Prindle 19 - spinnaker	687	18:43	43
18ft Skiff	675	18:44	44
Nacra 17	668	18:44	44
A Class Foiling	665	18:45	45
Nacra Inter 20 - doublehanded spinnaker	660	18:45	45
Formula 18	655	18:45	45
Nacra 17 Olympic foiler	646	18:46	46
Tornado	644	18:46	46
Nacra F20 Carbon	597	18:48	48



Grafham Water Sailing Club

Class	Great Lakes Handicap	Start Time	Start Number
Switch	590	18:49	49
International Moth	570	18:50	50
Nacra F20 Carbon FCS	570	18:50	50