



# B14

## **B14 National Championship**

**29<sup>th</sup>-31<sup>st</sup> August 2025**

**Mumbles Yacht Club, Swansea**

## **NOTICE OF RACE**

The Organizing Authority for the meeting is Mumbles Yacht Club.

### **1 RULES**

- 1.1 The event is governed by the rules as defined in *The Racing Rules of Sailing 2025-2028*, the rules of the B14 Class Association and this Notice of Race, except if any of these are changed by the Sailing Instructions.

### **2 SAILING INSTRUCTIONS**

- 2.1 The Sailing Instructions will be available after 20:00 on 22<sup>nd</sup> August 2025 from the club website <https://mumblesyachtclub.co.uk/index.php/B14-national-championships-2025/> and <https://webcollect.org.uk/mumblesyc/event/b14-nationals-2025>

### **3 COMMUNICATION**

- 3.1 The online Official Notice is located at <https://mumblesyachtclub.co.uk/index.php/official-notice-board/>
- 3.2 While racing, except in an emergency, a boat shall not make voice or data transmissions and shall not receive voice or data communication that is not available to all boats.

### **4 ELIGIBILITY AND ENTRY**

- 4.1 The event is open to all boats of the B14 class that are current members of the UK Class Association.
- 4.2 Boats may enter the event by registering online <https://webcollect.org.uk/mumblesyc/event/b14-nationals-2025>
- 4.3 Each boat shall be sailed by the helm and crew nominated on the entry form throughout the series. Substitution of competitors will not be allowed without prior written approval of the race committee.
- 4.4 Entries will close at midnight on the 24<sup>th</sup> August 2025.
- 4.5 Entries will be taken on the day at the Organising Authorities discretion.

- 4.6 Parent/Guardian Declarations: All helms and crews less than 18 years of age during the event shall submit signed Parent/Guardian Declarations either by post or at registration.
- 4.7 By registering for the event, competitors grant the Organising Authority, event sponsors and their agents without payment the right in perpetuity to make, use and show any motion pictures, still pictures and live, recorded video of, or relating to the competitors, unless otherwise advised in writing prior to the Regatta.

## 5 FEES

- 5.1 Entry fees are as follows:

Class	Entry Fee
B14	£140

- 5.2 The entry fee covers Council boat launching charges (£8.00) for the event.

## 6 CREW LIMITATIONS

- 6.1 Class rules apply.

## 7 ADVERTISING

- 7.1 Boats may be required to display advertising chosen and supplied by the organizing authority.

## 8 SCHEDULE

- 8.1 Registration: There is no registration process, and no event documentation will be issued during the event. All race documentation will be available online.
- 8.2 Equipment inspection and event measurement: There is no scheduled equipment inspection or event measurement.
- 8.3 The number of races scheduled is 9. All times below are 'not before'.

Day	Start Time	Warning Signal	Number of races	High Water
Friday 29 <sup>th</sup> August	11:30	11:25	3	10:25 @ 8.30m
Saturday 30 <sup>th</sup> August	11:30	11:25	3	10:54 @ 7.82m
Sunday 31 <sup>st</sup> August	10:30	10:25	3	11:30 @ 7.30m

- 8.4 Following races as soon as possible.
- 8.5 On the last scheduled day of racing no warning signal will be made after 1500hrs

## 9 EQUIPMENT INSPECTION

- 9.1 Inspection or measurement to check compliance with class rules may take place at any time except when racing.

## 10 CLOTHING AND EQUIPMENT

10.1 RRS 40.1 always applies whilst afloat.

## 11 VENUE

11.1 The Event Venue is Mumbles Yacht Club.

11.2 An event plan showing boat and car parking is included as Addendum 1.

11.3 Racing will usually be in the confines of Swansea Bay.

## 12 COURSES

12.1 Courses will be described in the Sailing Instructions.

12.2 The course target times are 45 minutes.

12.3 The number of laps will be described in the Sailing Instructions.

## 13 PENALTY SYSTEM

13.1 RRS 44.1 is changed so that the Two-Turns Penalty is replaced by the One-Turn Penalty, including one tack and one gybe.

13.2 When an incident occurs where a penalty applies while the head of the spinnaker is above the main-boom gooseneck, the penalty may be taken immediately after the next time the head of the spinnaker is lowered below the main-boom gooseneck but shall always be taken prior to rounding the next mark or crossing the finish line. This changes RRS 44.2.

## 14 SCORING

14.1 4 Races will constitute a Series

14.2 When four races have been completed, a boat's series score will be the total of her races scores.

14.3 When six races have been completed, a boats series score will be the total of her race scores excluding her worst score.

14.4 When all races are completed (9), a boats series score will be the total of her race scores excluding her two worst score.

14.5 RRS 90.3e shall apply.

14.6 If more than one of the helm or crew are changed during the series, then they **may** be scored as a separate entry and their results cannot be combined with another entry. This is at the class and race officers' discretion.

14.7 Finishing positions will be calculate using the following handicaps:

<b>Current Design</b>	All post 754 hulls. RYA PY	858
<b>Classic Carbon</b>	All pre 755 sailing with carbon mast. Current PY plus 10	868
<b>Classic Alloy</b>	All pre 755 sailing with Alloy mast. Current PY plus 20	878

## **15 SUPPORT PERSON VESSELS**

15.1 Support vessels shall not be allowed.

## **16 DOES NOT APPLY**

## **17 DOES NOT APPLY**

## **18 DOES NOT APPLY**

## **19 DOES NOT APPLY**

## **21. DATA PROTECTION**

21.1. Mumbles Yacht Club has a data protection policy.

## **22 RISK STATEMENT**

22.1 RRS 3 states: 'The responsibility for a boat's decision to participate in a race or to continue to race is hers alone.' By participating in this event each competitor agrees and acknowledges that sailing is a potentially dangerous activity with inherent risks. These risks include strong winds and rough seas, sudden changes in weather, failure of equipment, boat handling errors, poor seamanship by other boats, loss of balance on an unstable platform and fatigue resulting in increased risk of injury. Inherent in the sport of sailing is the risk of permanent, catastrophic injury or death by drowning, trauma, hypothermia, or other causes.

## **23 INSURANCE**

23.1 Each participating boat shall be insured with valid third-party liability insurance with a minimum cover of £2,000,000 per incident or the equivalent.

## **24 PRIZES**

24.1 Overall prizes for the top 3 entries

24.2 Other prizes may be awarded at the discretion of the Class and Organising Authority.

## **25 FURTHER INFORMATION**

### **Social Activities**

- There will be a quiz on Friday evening

25.1 Live music will be scheduled for Saturday evening.

25.2 The galley will be open on Friday, Saturday and Sunday mornings for breakfast

- The galley will open on Thursday evening and throughout the event when competitors come off the water for dinner.

25.3 Evenings meals on Friday and Saturday are included in the entry fee for competitors.

### **Photography**

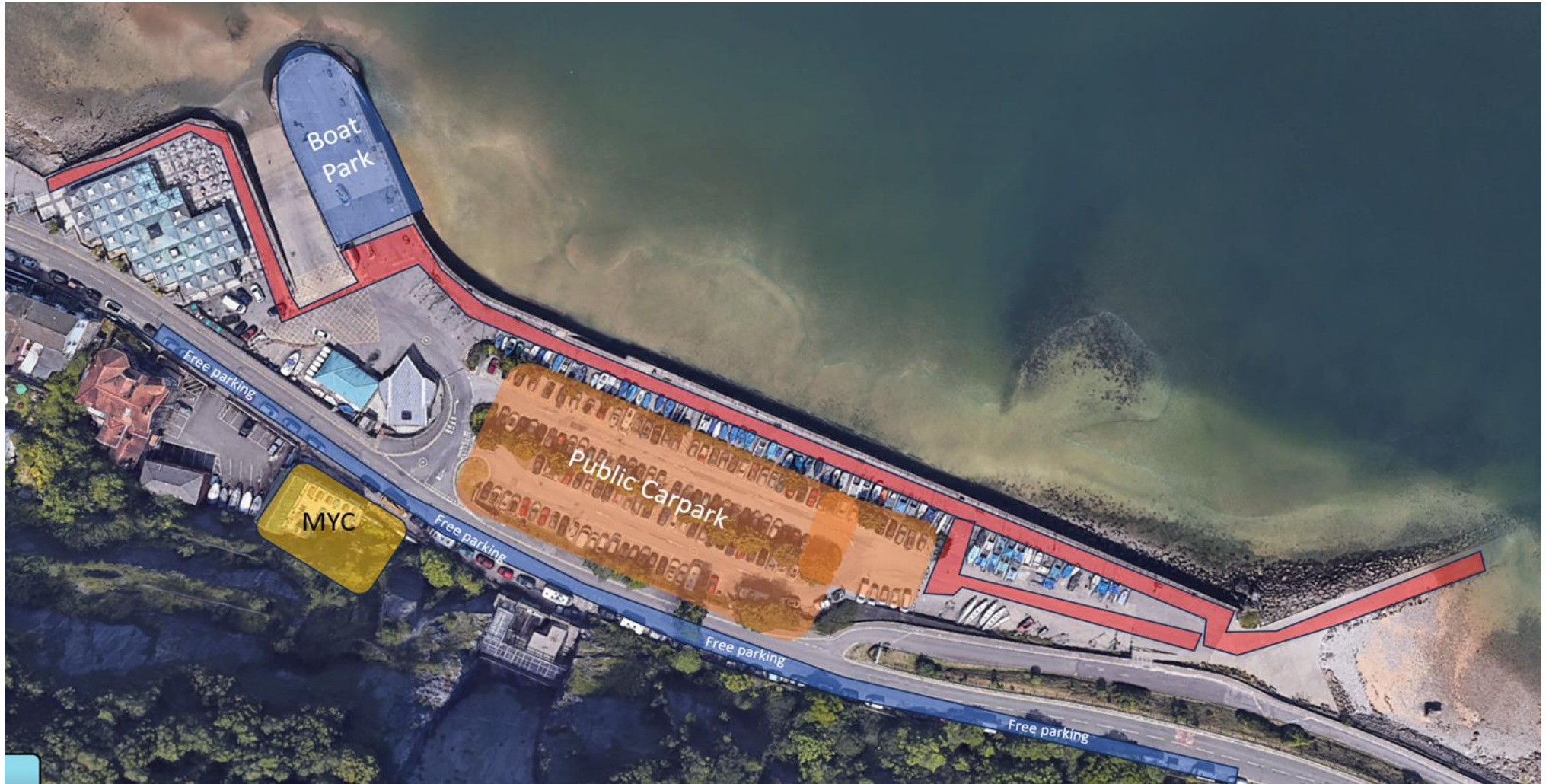
25.4 We hope to have a photographer at the event to take and share photographs of the event.

### **Accommodation**

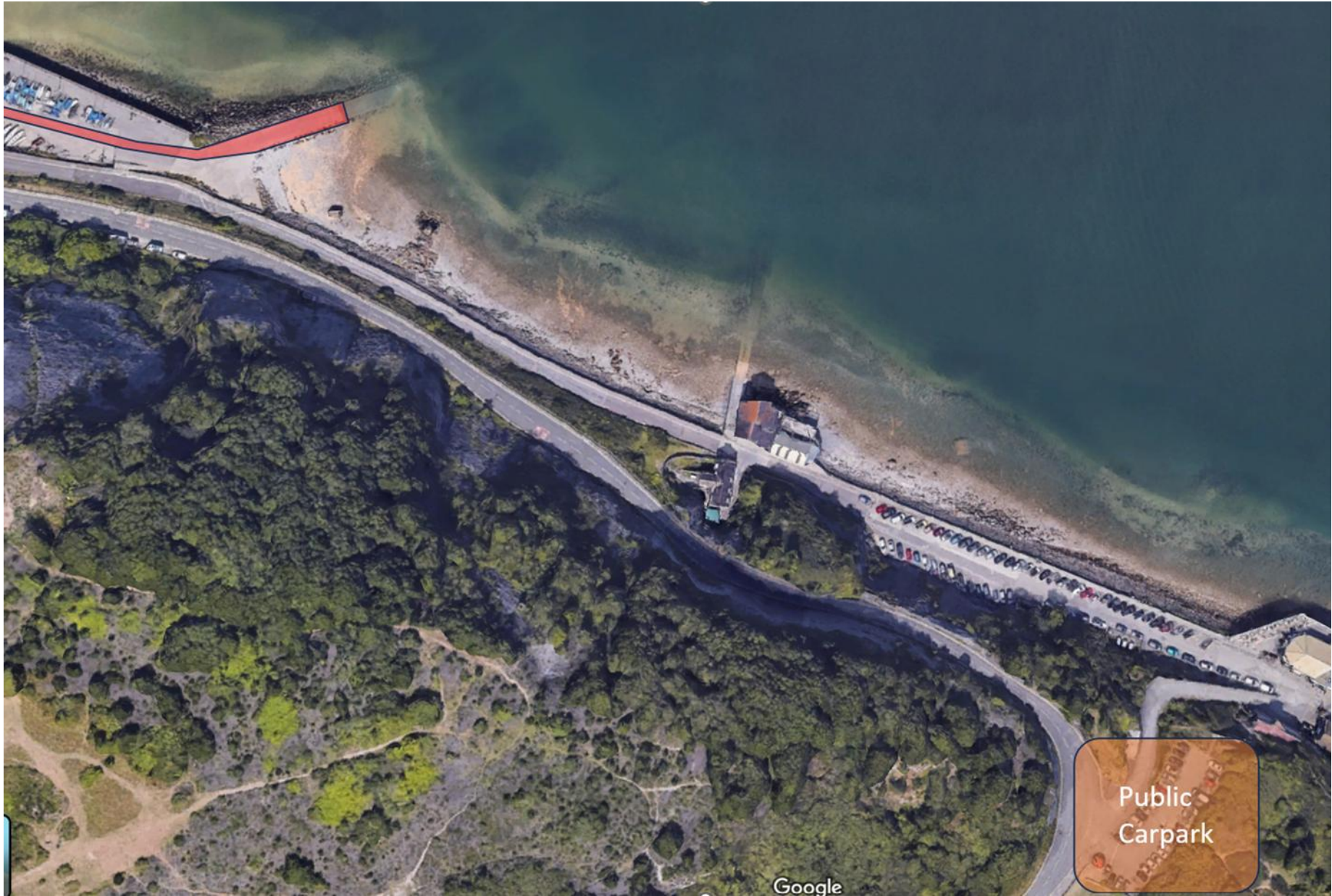
- 25.5 There are a number of bed and breakfasts and air B & B's within Mumbles and the surrounding area. [The Chapel House](#) has private rooms, dorms and private hire for up to 21 guests. This is in walking distance of the clubhouse.
- 25.6 Camper vans with a height lower than 2.3m are allowed in the main car park opposite the Clubhouse and boat park on a pay and display basis. This can be paid for using the app MiPermit.
- There is a car park for larger vehicles within walking distance at Bracelet Bay.
  - Parking on the road outside the Club is permitted on a first come first served basis.
  - Overnight access to the Clubhouse changing rooms / toilet facilities can be granted on request.



**ADDENDUM 1**  
**EVENT PLAN**







Public  
Carpark