



Norfolk Punt Club

Sailing Instructions

Revised September 2022

1. RULES

1.1 Racing will be governed by the rules as defined in the Racing Rules of Sailing (RRS).

2. NOTICES TO COMPETITORS

Notices to Competitors will be posted on the notice board located on the club pontoons.

3. CHANGES TO SAILING INSTRUCTIONS

Changes to Sailing Instructions will be posted on the official notice board at least 10 minutes before the warning signal of the race in which they take effect. The L flag should be flown.

4. HANDICAP RACES

4.1 All boats racing in handicap races shall sail to their Portsmouth Number and have their time corrected accordingly.

4.2 At its discretion, the regatta committee may allocate a special Portsmouth Number to a boat, which the boat must sail for the entire regatta. All such numbers will be posted on the notice board.

5. ENTRIES

5.1 A boat will be entered in all the races it is eligible for from the online entry.

6. SCHEDULE OF RACES

6.1 Regatta race schedule will be published on the Norfolk Punt Club website and Facebook page

6.2 Starts will not be any earlier than those published

6.3 The race committee reserves the right to change the racing programme with all notices being adhered to.

7. CLASS FLAGS

Class Flags will be in accordance with the Norfolk and Suffolk Boating Association Handbook.

8. THE COURSE

8.1 The course to be sailed will be displayed on the club pontoon and the starting raft if being used.

8.2 A separate course for junior races may be displayed on the club pontoon below the main course, or indicated elsewhere at the race officer's discretion.

8.3 The course display will consist of a series of coloured boards with white characters to be read from left to right. The colour of the board background (red or green) will indicate the side (port or starboard respectively) on which the buoy is to be left.

8.4 The number of rounds to be sailed will be indicated by a white figure on a black background at the end of the course display.

8.5 The race officer may, at his or her discretion, shorten course in accordance with RRS 32. (A sound signal and a flag is displayed when the leading boat rounds the final mark of the course and the class flag will be flown for the race being shortened). In this case the finish will be determined by when the leading boat next crosses the finish line in the process of sailing the prescribed course.

8.6 The course will not be changed after the start sequence has begun. This changes RRS 33.

8.7 When mark 1 and mark A are consecutive (in either direction) marks of the course, all boats shall pass to the east of Pleasure Island.

9. MARKS

9.1 Marks of the course will be pink / red buoys (except the Mark J which has a white buoy) displaying appropriate mark insignia as detailed below.

Mark D displays flag D

Mark J displays the J flag on a white buoy

Mark R displays the flag R.

9.2 Approximate positions of the marks are as follows:

Mark 1 – in the area of the broad north of the club pontoons

Mark 2 – near Pleasure Island and the East Gap

Mark A – in the south east corner of the broad, near the River Ant entrance

Mark N – in the south-west corner of the broad, near the Neatishead channel.

All other marks may be positioned anywhere on the broad. Published on the pontoon.

9.3 Starting distance marks will be red/pink buoys with white flags.

9.4 The exclusion zone marks are red/ pink buoys with a white flag with an X on the flag

9.5 The finishing mark will be a large yellow inflatable buoy.

9.6 Mark J will be used for junior races or may be used for other races if no juniors are racing.

10. AREAS THAT ARE OBSTRUCTIONS

10.1 A large inflatable red/orange buoy, referred to as the Dolphin, placed in the vicinity of the northern shore at the entrance to Neatishead channel, denotes a shallow water area. It shall be treated as an obstruction and shall be passed to the east. RRS19 (Room to Pass an Obstruction) shall apply, excluding 19.2(a). RRS 18 (Mark Room) shall not apply.

10.2 The club pontoons shall be treated as a fixed obstruction and must always be passed to the east, (the front) of the pontoon.

11. COMMITTEE BOAT /Starting Raft STARTS

11.1 If races are to be started from a committee boat / starting raft, a yellow flag will be flown on the club pontoons.

11.2 The starting line will be between a signal post on the committee boat / starting raft, and an outer distance mark. The line will be limited by an inner distance mark.

11.3 A board representing naval numeral flag 8 will be displayed to the left of the first mark to be rounded following the start. The committee boat may display the course, but SI 8.1 is not changed.

11.4 The inclusion of the letter F, in white on a blue background, in the course indicates a clubhouse finish, having rounded the mark preceding the letter F the prescribed number of times.

11.5 A starting exclusion zone may be marked by buoys displaying a flag marked 'X' positioned to leeward of the starting line. Boats may not sail between these buoys and the starting line before their preparatory signal.

11.6a Other than for boats described in SI 11.6b, If any part of a boat's hull, crew or equipment is on the course side of the start line or its extensions during the minute before the start, they will not start until they have sailed completely to the pre-start side of the line around either distance mark. Flag I will not be flown. This changes RRS 30.1.

11.6b RRS 30.1 will NOT apply to River Cruisers taking part in NPC Open Events or Regattas. Meaning they do not have to round an outer distance marker. They may sail back across the line to re-start. They will not start until the entirety of the boat is on the pre-start side of the starting line.

11.7 If any boat has failed to comply with SI 12.4a or b, as appropriate, at the start, one extra sound signal will given, the class flag will remain flying at the dip until all boats have so complied. This changes RRS 29.2.

12. THE START

12.1 Races will be started as follows:

Warning signal, 5 minutes before start, Class flag, 1 sound signal

Flag P, 1 sound signal Preparatory signal, 4 minutes before start,

A sound signal (a bell) will be given at 1 minute before the start, this changes RRS26.

Start, class flag removed, 1 sound signal. All flags removed for last start in the series

This changes RRS26

12.2 If the start is from the pontoon the starting line will be a prolongation of an imaginary line drawn through the white signal post behind the officer's box, and the red and white striped post in front of the officer's box. Inner and outer distance marks may be used.

12.3 A starting exclusion zone may be marked by buoys displaying a flag marked 'X' positioned to leeward of the starting line. Boats may not sail between these buoys and the starting line before their preparatory signal.

12.4a If any part of a boat's hull, crew or equipment is on the course side of the start line or its extensions during the minute before the start, they will not start until they have sailed completely to the pre-start side of the line through an extension of the line. Flag I will not be flown. This changes RRS 30.1.

12.4b RRS 30.1 will NOT apply to River Cruisers taking part in NPC Open Events or Regattas. Meaning they do not have to round an outer distance marker. They may sail back across the line to re-start. They will not start until the entirety of the boat is on the pre-start side of the starting line.

12.4c The start times for the river cruiser class will be posted on the pontoon no less than one hour before their start.

12.5 If any boat has failed to comply with SI 12.4a or b, as appropriate, at the start, one extra sound signal will be given, the class flag will remain flying at the dip until all boats have so complied. This changes RRS 29.2.

13. THE FINISH

13.1 The finish line will be an imaginary line drawn from the central position of the signal mast in front of the officer's box to, but not beyond, a yellow inflatable buoy.

13.2 After finishing, a boat is still racing until her hull, crew and all equipment, in their normal positions, have crossed the finish line.

14. PROTESTS AND REQUESTS FOR REDRESS

14.1 Protest forms are available from the officer's box. Protests shall be delivered in writing to the officer's box, accompanied by a fee of £1, within the protest time limit.

14.2 For the purposes of RRS 61.3, the protest time limit will be 60 minutes after the finish of the last boat in that race, except where the race is in the last series of the day, in which case the protest time limit will be 30 minutes.

15. SCORING FOR OPEN EVENTS

15.1 The scoring system for the regatta will be under **ISAF Rules of sailing Appendix A**

15.2 If three or fewer races are available, a boat's score shall be the total of all her race scores. This changes RRS A2.

17. SAFETY REGULATIONS

17.1 **Personal flotation devices shall be worn by all DINGHY sailors, at all times, while afloat. This changes RRS 40**

17.2 When a red flag is displayed on the club pontoon, all competitors, in all competing boats, shall wear personal flotation devices. This changes RRS 40.

17.3 Any competing boat whose crew fails to comply with 17.1, or 17.2 when applicable, will be immediately disqualified from the current race.

17.4 Boats that retire from a race shall notify the race officer as soon as possible.

18. PRIZES

Prizes will be awarded in accordance with the regatta programme.

19. DISCLAIMER OF LIABILITY

The club will not accept liability for material damage or personal injury or death sustained in conjunction with, prior to, during, or after racing. Attention is drawn to RRS 1.2 and 4.

19.1 The responsibility for a boat's decision to participate in a race or to continue racing is theirs alone.

20. INSURANCE

Each participating boat shall have valid third-party insurance for a minimum of £2,000,000.

21. ALTERNATIVE PENALTIES FOR RIVER CRUISER CLASS YACHTS

21.1 For River Cruiser Class yachts, the 1 turn and 2 turns Penalties (rule 44.1) are replaced by Time Penalties, of 1 and 2 minutes respectively added to the Yacht's elapsed time, to be acknowledged by the said yacht flying a green rectangular flag.

21.2 It is the responsibility of the helm to declare to the Race Officer, within the prescribed time limit for protests, which penalty or penalties the yacht is taking.

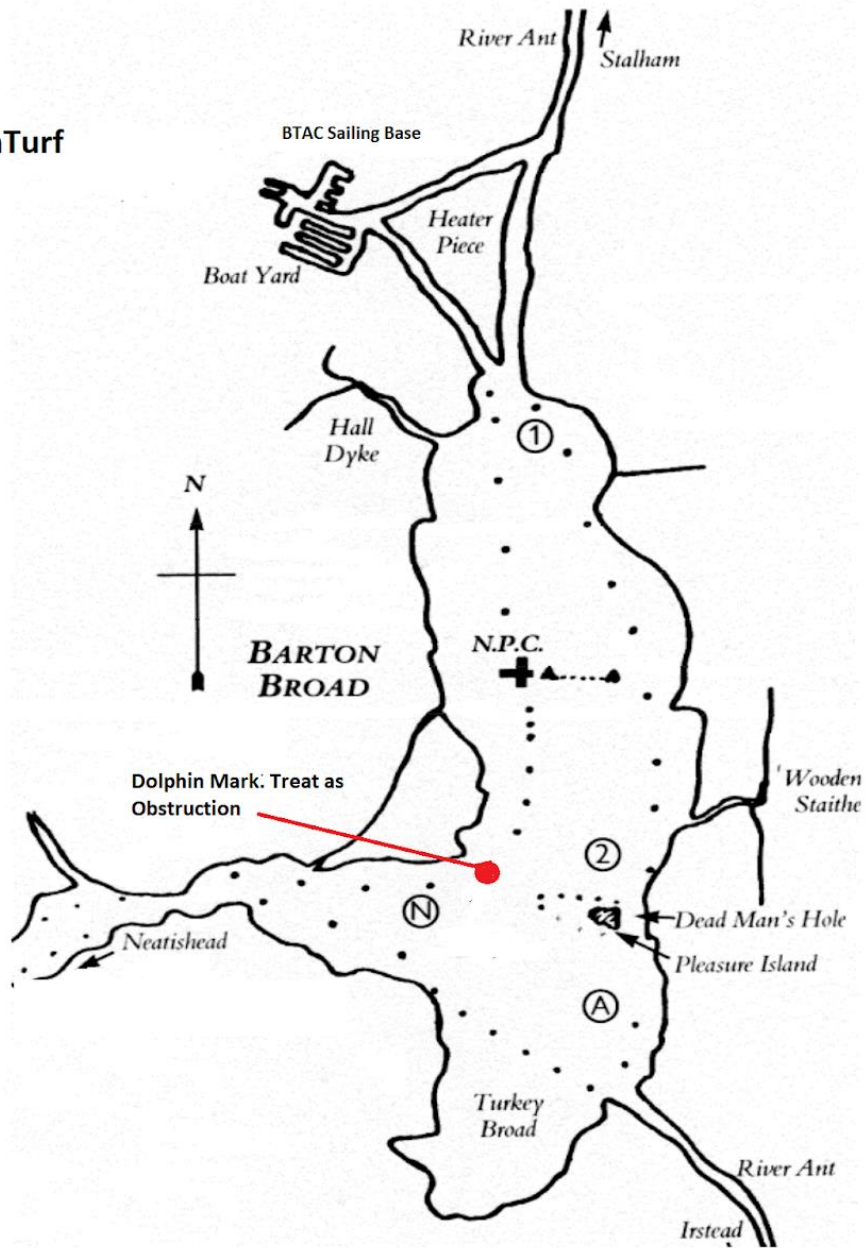
21.3 A yacht that fails to make a declaration will be assumed to have retired.

21.4 It is the responsibility of other competitors to ensure that these provisions are enforced.

21.5 This amendment applies for all races, including allcomers.

Barton Broad
(Not to scale)

BartonTurf



NOTE

The D, R and J marks (not shown) may be laid in any part of the Broad.

The Dolphin denotes an obstruction and shall be passed to the east (see SI 10.1). Mark Room does not apply.

Revised June 2018

Revised June 2023 and valid until further notice.