



P & B British Finn Inland Championship

21 - 22 September 2024
Northampton Sailing Club

SAILING INSTRUCTIONS (SIs)

The notation '[NP]' in a rule of the sailing instructions (SIs) means that a boat may not protest another boat for breaking that rule. This changes RRS 60.1(a).

1 RULES

- 1.1 The event is governed by the rules as defined in The Racing Rules of Sailing.

2 CHANGES TO SAILING INSTRUCTIONS

- 2.1 Any change to the sailing instructions will be posted before 0900 on the day it will take effect, except that any change to the schedule of races will be posted by 1800 on the day before it will take effect.

3 COMMUNICATIONS WITH COMPETITORS

- 3.1 Notices to competitors will be posted on the official notice board located in the club galley and may be published online at <https://northamptonclub.org/>
- 3.2 [DP][NP] While racing, except in an emergency, a boat shall not make voice or data transmissions and shall not receive voice or data communication that is not available to all boats, unless it is done in compliance with class rules.

4 CODE OF CONDUCT

- 4.1 [DP] Competitors and support persons shall comply with reasonable requests from race officials.
- 4.2 [DP] Competitors shall place advertising provided by the organizing authority with care, seamanship, in accordance with any instructions for its use and without interfering with its functionality.

5 SIGNALS MADE ASHORE

- 5.1 Signals made ashore will be displayed on the flag pole on the veranda.
- 5.2 When flag AP is displayed ashore, '1 minute' is replaced with 'not less than 30 minutes' in Race Signals AP.

6 SCHEDULE OF RACES

- 6.1 The race schedule is as follows:

Date:	Time of 1 st warning signal & scheduled races per day:	
	Time:	# Races:
Sat 21 Sept	1230hrs	3
Sun 22 Sept	0955hrs	3

- 6.2 There will be a briefing for competitors at 1130hrs on Saturday on the patio outside the club house.
- 6.3 One extra race per day may be sailed on Saturday, provided the change is made according to SI 2.1.
- 6.4 To alert boats that a race or sequence of races will begin soon, the orange starting line flag will be displayed with multiple sound at least two minutes before a warning signal is made.
- 6.5 On the last scheduled day of racing no warning signal will be made after 1500hrs.

7 CLASS FLAGS

- 7.1 The class flags will be the Class Flag or International Code Flag D.

8 RACING AREA

- 8.1 Pitsford Reservoir, Brixworth, Northamptonshire.

9 COURSES

- 9.1 The diagram in SI Addendum A shows the course, including the approximate angles between legs, the order in which marks are to be passed, and the side on which each mark is to be left.
- 9.2 If a gate mark is missing and has not been substituted in accordance with RRS 34, the remaining mark shall be rounded to port.
- 9.3 No later than the warning signal, the race committee signal vessel will display the course and approximate compass bearing of the first leg.
- 9.4 Courses may be shortened at the gate by displaying the 'S' flag on the committee boat to indicate that boats should proceed to the finish line where they will be finished. This changes RRS 32.

10 MARKS

- 10.1 Marks 1, 2s and 2p will be P & B inflated cylinders. Mark 1a will be a small orange inflatable dumpy mark.
- 10.2 Starting marks will be a race committee signal vessel at the starboard end, and a

vessel or a dan buoy with an orange flag at the port end.

10.3 Finishing marks will be a race committee vessel and a vessel or dan buoy with a blue flag.

11 OBSTRUCTIONS

11.1 The following are designated as obstructions:

Fishing boats

12 THE START

12.1 Races will be started using RRS 26 with the warning signal made 5 minutes before the starting signal.

12.2 The starting line is between a staff displaying an orange flag on the signal vessel at the starboard end and the port-end starting mark as defined in SI 10.2.

12.3 A boat that does not start within 5 minutes after her starting signal will be scored Did Not Start without a hearing. This changes RRS A5.1 and A5.2.

13 CHANGE OF THE NEXT LEG OF THE COURSE

13.1 To change the next leg of the course, the race committee will move the original mark or the finishing line to a new position.

13.2 When Mark 1 has been relaid, Mark 1a is no longer a mark of the course; it will be removed as soon as practicable. This changes RRS 33.

13.3 Mark moves of less than 100 meters or 10 degrees may be made without signalling the change. This changes RRS 33

14 THE FINISH

14.1 The finishing line is between a staff displaying a blue flag on the committee vessel and the end finishing mark as per SI 10.3.

14.2 The race committee may award a finishing place to a boat by pointing flag W at her with a sound. The signalled boat shall be deemed to have finished, and the score awarded shall be the position she occupied at the time of the signal. If two or more overlapped boats are signalled, they shall be scored as if they were tied. This changes RRS 28.1 and A3.

15 PENALTY SYSTEM

15.1 Appendix P, Special Procedures for Rule 42, will apply, except that rule P2.1 will apply to all penalties. P2.2 and P2.3 are deleted.

16 TIME LIMITS [AND TARGET TIMES]

16.1 The Mark 1 Time Limit, Race Time Limit (see RRS 35) are shown in the table below.

Target Time	Mark 1 Time Limit	Race Time Limit
50	30	60

16.2 If no boat has passed the first mark within the Mark 1 Time Limit, the race will be abandoned.

16.4 Failure to meet the Target Time will not be grounds for redress. This changes RRS 62.1(a).

17 HEARING REQUESTS

17.1 The protest time limit is 60 minutes after the last boat finishes the last race of the day or the race committee signals no more racing today, whichever is later. The time will be posted on the official notice board.

17.2 Hearing request forms are available from the desk near the official notice board.

17.3 Notices will be posted no later than 30 minutes after the protest time limit to inform competitors of hearings in which they are parties or named as witnesses. Hearings will be held in the protest room which will be identified on the notice.

17.5 RRS 62.2(a) and 66.2(a) do not apply.

17.6 The right of appeal from a protest committee decision is denied as provided in rule 70.5[(a)][(b)][(c)].

18 SCORING

18.1 The scoring system is as defined by appendix A Low Point System.

18.2 One races are required to be completed to constitute a series.

18.3 (a) When fewer than 3 races have been completed, a boat's series score is the total of her race scores.

(b) When 3 or more races have been completed, a boat's series score is the total of her race scores excluding her worst score.

18.6 Rule A5.3 applies.

19 SAFETY REGULATIONS

19.1 [DP] A boat that retires from a race shall notify the race committee at the first reasonable opportunity.

19.2 [DP] RRS 40.1 (*Personal Flotation Devices*) shall apply at all times while afloat.

20 REPLACEMENT OF CREW OR EQUIPMENT

20.1 [DP] Substitution of competitors is not allowed.

20.2 [DP] Substitution of damaged or lost equipment is not allowed unless authorized in writing by the Race Officer. Requests for substitution shall be made to the Race Officer at the first reasonable opportunity, which may be after the race.

21 EQUIPMENT AND MEASUREMENT CHECKS

See NOR section 7

22 SUPPLIED BOATS

N/A

23 OFFICIAL VESSELS

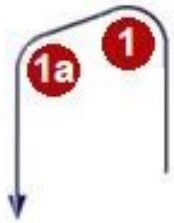
23.1 Official vessels will be committee vessel, mark layers or safety boats.

24 [DP] SUPPORT TEAMS

See NOR section 11

- 25 TRASH DISPOSAL
 - 25.1 Trash may be placed aboard official vessels.
- 26 BERTHING
 - N/A
- 27 HAUL-OUT RESTRICTIONS
 - N/A
- 28 DIVING EQUIPMENT AND PLASTIC POOLS
 - N/A
- 29 PRIZES
 - See NOR section 13
- 30 RISK STATEMENT
 - See NOR section 15
- 31 INSURANCE
 - See NOR section 16

SI ADDENDUM A
 Course Diagrams
 Windward/Leeward



Signal	Mark Rounding Order
L1	Start - 1- 1a - 2p - Finish
L2	Start -1 – 1a – 2s/2p – 1 -1a -2p - Finish
L3	Start -1 – 1a – 2s/2p – 1 -1a -2s/2p – 1 – 1a - 2p - Finish
L4	Start -1 – 1a – 2s/2p – 1 -1a -2s/2p – 1 – 1a – 2s/2p – 1 -1a - 2p - Finish