



Rock Sailing and Water Ski Club
Notice of Race
K1 Open Meeting
18th and 19th July 2026

Sponsored by Ovington Boats and Craftinsure

The Organising Authority (OA) is the Rock Sailing and Water Ski Club (RSWSC) In conjunction with the K1 International Class Association.

1. RULES

- 1.1 The regatta is governed by the rules as defined in The Racing Rules of Sailing
- 1.2 The RYA prescriptions will apply.
- 1.3 The K1 Class Rules will apply.
- 1.4 The Rock Sailing and Water Ski Club (RSWSC) Sailing Instructions (SI) and any S supplementary Sailing Instructions (SSAI's) will apply.

2. ADVERTISING

- 2.1 Shall comply with World Sailing Regulation 20 and the relevant rules of the individual competitor's Class Association. The K1 International Association or RSWSC may require the display of advertising material.

3. ELIGIBILITY AND ENTRY

- 3.1 The event is open to all boats of the K1 International Class. The helm must be paid up, full members of the K1 International Class Association, prior to registration. However, a non-class member may compete by paying a £10 regatta fee to the Class Association directly
- 3.2 Entry fees are:
 - £85.00 per boat including 1 meal ticket
 - £70.00 per boat excluding a meal ticket
- 3.3 Entry fee includes boat park and harbour dues.
- 3.4 **Boats should be returned to trailers after the days racing to avoid being charged an £5.50 night for an additional space for the trailer. Alternatively take to your accommodation.**
- 3.5 Additional Saturday evening meals can be purchased at time of entry at **£15.00 per head.**
- 3.6 Entry including 1 meal ticket and additional meal ticket booking will close at 23:59 on 11th July 2026.



- 3.7 Entry excluding a meal ticket will remain open until 23:59 on the 18th July 2026.
- 3.6 Eligible boats may enter by completing the regatta Entry Form on the RSWSC Website and paying the required fee as directed online [here](#).
- 3.7 All boats shall sail using their registered sail numbers. Any changes to sail numbers shall be requested in writing and approved by the PRO before racing commences.

4 CLASS STARTS

- 4.1 Single start for all competitors as per section 6 below.

5 RESULTS AND PRIZES

- 5.1 The results will be published in the RSWSC Club House and on the RSWSC web site as soon as practicable after each race.
- 5.2 The event prize giving will be held as soon as possible after the completion of racing on Sunday 19th July 2026 in the Rock Sailing and Waterski Club clubhouse.

6 SCHEDULE and FORMAT

- 6.1 Registration Saturday 18th July from 10:00
- 6.2 Briefing will at RSWSC clubhouse on Saturday 18th July at 11:00
- 6.3 Daily sailors briefing at RSWSC 90 minutes prior to the first race of the day.
- 6.4 Race dates & times will be posted daily based on the schedule below and races each day will be sailed back to back:

Date & Race Times		1	2	3	4	5	6
Saturday	18/07/2026	13:00	TBC	TBC			
Sunday	19/07/2026				10.30	TBC	TBC

(Note: If conditions dictate and racing has to be in the harbour or other sheltered area times may be changed).

7 SAILING INSTRUCTIONS AND SCORING

- 7.1 Sailing Instructions will be available online when entering and it would be appreciated if competitors could print a copy as limited copies will be available in the RSWSC Club House. The Sailing Instructions for the regatta contain additional information regarding the regatta.
- 7.2 2 completed races are required in order to constitute a series
- 7.3 When fewer than 4 races have been completed, a boat's series score will be the total of her race scores.



7.4 When 4 or more races have been completed, a boat's series score will be the total of her race scores excluding her worst score.

8. RIGHTS TO USE NAMES & LIKENESSES

8.1 Competitors automatically grant to the RSWSC, the K1 Class Association and their sponsors without payment the right in perpetuity to make, use and show any motion or still pictures and live, taped, or filmed television of or relating to the event.

9. VENUE AND COURSES

9.1 The regatta is held in the River Camel and the Camel Estuary, Rock, Cornwall.

9.2 Course areas will be selected based on daily prevailing and forecasted conditions, generally course area 4 will be used as shown in ANNEX 1 below unless conditions dictate otherwise.

9.3 All course areas are shown below in ANNEX 1.

9.4 Courses will be displayed prior to the days racing in the RSWSC Club House, and if appropriate on WhatsApp.

10. BERTHING

10.1 Boat parking is at Ferry Point (Shown on the diagram at ANNEX 1) which is a short walk along the beach from RSWSC. Launching is via the slipways.

11. RISK STATEMENT

11.1 Rule 3 of the Racing Rules of Sailing states: 'The responsibility for a boat's decision to participate in a race or to continue racing is hers alone.'

Sailing is by its nature an unpredictable sport and therefore inherently involves an element of risk. By taking part in the event, each competitor agrees and acknowledges that:

They are aware of the inherent element of risk involved in the sport and accept responsibility for the exposure of themselves, their crew and their boat to such inherent risk whilst taking part in the event;

They are responsible for the safety of themselves, their crew, their boat and their other property whether afloat or ashore;

They accept responsibility for any injury, damage or loss to the extent caused by their own actions or omissions;

Their boat is in good order, equipped to sail in the event and they are fit to participate;

The provision of a race management team, patrol boats and other officials and volunteers by the event organizer does not relieve them of their own responsibilities;

The provision of patrol boat cover is limited to such assistance, particularly in extreme weather conditions, as can be practically provided in the circumstances;



It is their responsibility to familiarise themselves with any risks specific to this venue or this event drawn to their attention in any rules and information produced for the venue or event and to attend any safety briefing held for the event;

12. INSURANCE

12.1 Each participating boat shall be insured with valid third-party liability insurance with a minimum cover of £3,000,000 per incident or the equivalent.

13. OFF WATER PROGRAM

Date & Race Times		Time	Event	Venue	Cost
Friday	17/07/2026	18:00	Fish & Chips	RSWSC	Own Expense
Saturday	18/07/2026	18:00	Regatta Meal	RSWSC	*1 meal included entry
Sunday	19/07/2026	TBC	Prizing Giving	RSWSC	Own Expense

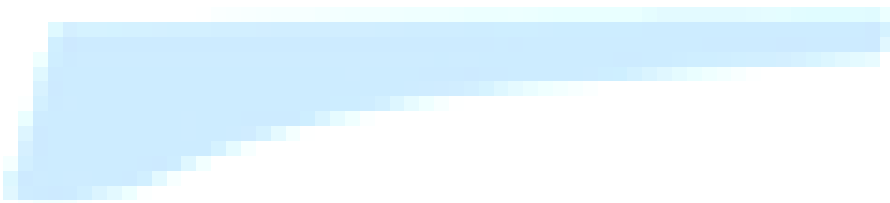
Additional meals can be purchased on entry.

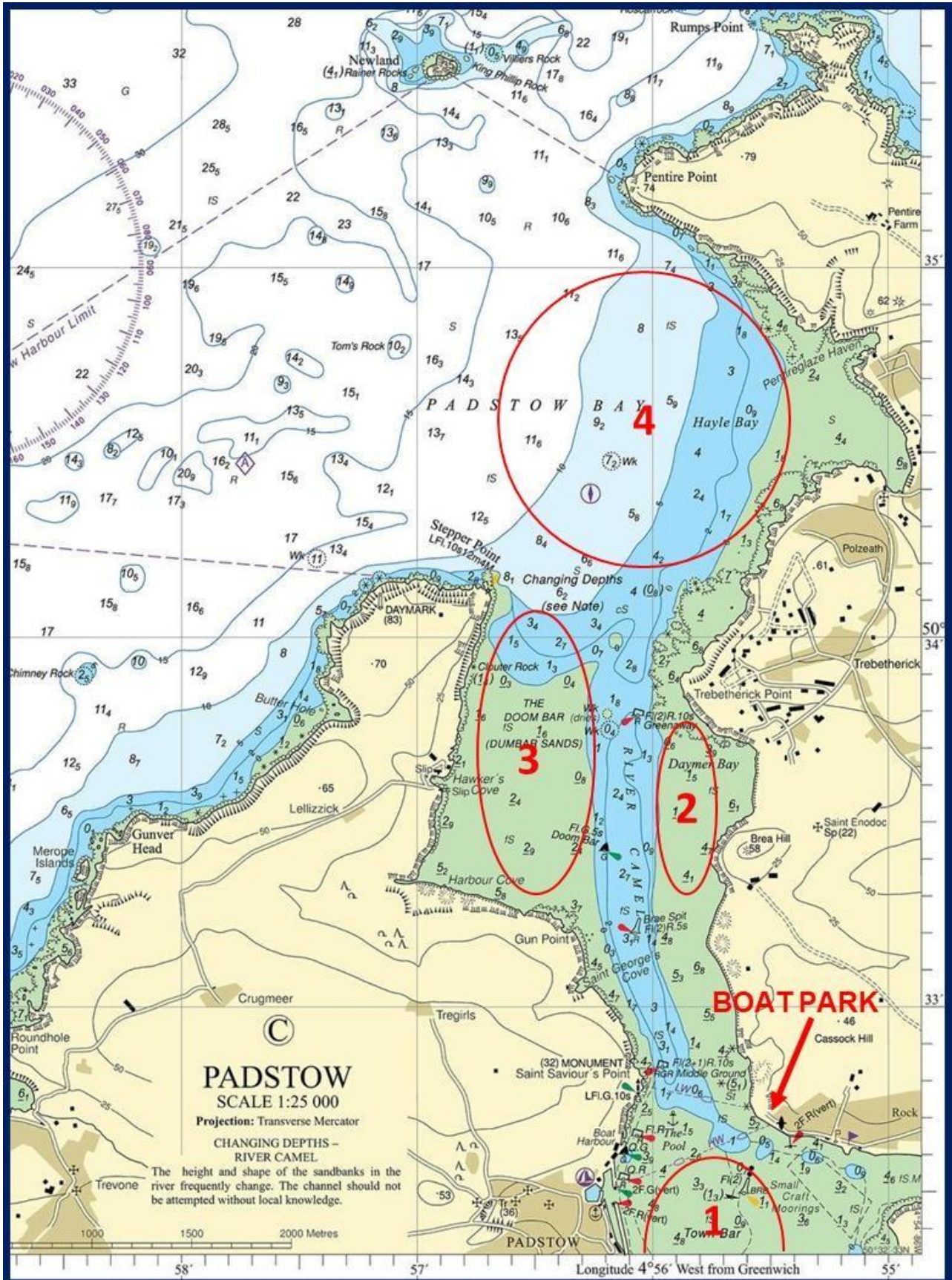
(Note – Please indicate attendance for the fish & chips when entering.
The above schedule may change. All changes will be communicated to competitors)

14. For further information please contact the Club:

Rock Sailing and Water Ski Club, The Quay, Rock, Wadebridge, Cornwall, PL27 6LB.

**ANNEX 1
RSWSC COURSE AREAS**







Boat Park and Launching



Example Slipway

