

Rock Sailing and Water Ski Club
Sailing Instructions (SI's)
Fireball UK Nationals and Open Championships
20th, 21st, 22nd and 23rd July 2024

The Organising Authority (OA) is the Rock Sailing and Water Ski Club (RSWSC)
In conjunction with the UK Fireball Class Association (UKFA)

1 RULES

- 1.1. The event is governed by the rules as defined in *The Racing Rules of Sailing 2021-2024* including Royal Yachting Association (RYA) prescriptions.
- 1.2. Competitors should note that the OA implements the RYA Racing Charter and that they will be expected to sail in compliance with it.
- 1.3. The rules of the International UK Fireball Class Association shall apply.
- 1.4. RRS40 Personal Flotation Devices – RRS 40.1 applies at all times whilst afloat.

2 CHANGES TO SAILING INSTRUCTIONS

- 2.1 Any change to the sailing instructions will be posted before 0900 on the day it will take effect, except that any change to the schedule of races will be posted by 2000 on the day before it will take effect.

3 COMMUNICATIONS WITH COMPETITORS

- 3.1 Notices to competitors will be posted on the official notice board located at Rock Sailing and Waterski Club (RSWSC).
- 3.2 Communications will be made by the race committee to competitors via WhatsApp
- 3.3 While racing except in an emergency, a boat shall not make voice or data transmissions and shall not receive voice or data communication that is not available to all boats. This restriction also applies to mobile telephones.

4 CODES OF CONDUCT

- 4.1 Competitors and support persons shall comply with reasonable requests from race officials.
- 4.2 Competitors and support persons shall place advertising provided by the

organizing authority in accordance with any instructions for its use and without interfering with its functionality.

5 SIGNALS MADE ASHORE

- 5.1 Signals made ashore will be displayed on the flag post at Rock Sailing and Waterski Club.
- 5.2 When flag AP is displayed ashore, '1 minute' is replaced with 'not less than 60 minutes' in Race Signals AP.
- 5.3 When flag D is displayed ashore boats are required to remain ashore.

6 SCHEDULE OF RACES

- 6.1 The schedule below indicates proposed start times and may be subject to change to accommodate prevailing weather and/or tidal conditions.

Race Times		1	2	3	4	5	6	7	8
Saturday	20/07/2024	14:00	After R1						
Sunday	21/07/2024			11:00	After R3				
Monday	22/07/2024					12:00	After R5		
Tuesday	23/07/2024							10:00	After R7

- 6.2 One extra race per day may be sailed, and the change is made according to SI 2.1.
- 6.3 The scheduled time of the warning signal for the first race each day is 5 minutes before the time shown in SI 6.1 or as otherwise notified.
- 6.4 To alert boats that a race or sequence of races will begin soon, the orange starting line flag will be displayed with one sound at least five minutes before a warning signal is made.
- 6.5 On the last scheduled day of racing no warning signal will be made after 14.00

7 CLASS FLAGS

- 7.1 The Class flag is the Numeral Pennant No. 1

8 RACING AREA

- 8.1 The racing area is the Camel Estuary and Padstow Bay. SI Addendum 1 shows the approximate location of the racing area

9 COURSES

- 9.1 The diagram(s) below in SI Addendum 2 show(s) the course(s), including the approximate angles to the wind, the order in which marks are to be passed, and the side on which each mark is to be left. The approximate windward leg length will be c. 0.7 to 1 nautical mile dependent upon weather and tidal conditions.

- 9.2 No later than the warning signal, the race committee signal vessel will display the course code and the approximate compass bearing of the first leg.
- 9.3 If a course is shortened such that the finish is at the leeward end of the course, then the finish line will be that defined in paragraph **Error! Reference source not found..** This changes RRS 32.

10 MARKS

- 10.1 Marks are cylindrical or spherical orange inflatable buoys or for finishing and starting a 'Pin' mark with a flag.

11 OBSTRUCTIONS

- 11.1 The following objects are designated as obstructions:
- Commercial fishing or trip boats

12 THE START

- 12.1 Races will be either line or gate starts with the warning signal made 5 minutes before the starting signal. Further signals of 4 minutes and 1 minute will be made prior to the start signal
- 12.2 Races will not be started until the Race Committee (RC) are satisfied that the wind strength across the course is 5 knots or greater. Races will be started as follows:
- 12.2 Line starts:
- The starting line is between a staff on the committee boat displaying an orange flag at the starboard end and a distance/starting mark or 'pin' with an RSWSC flag on a small red buoy at the port end.

12.3 Gate Starts:

The Gate is a line between the 'Pin', (RSWSC flag on a small red buoy), a mark positioned close to the Committee Boat and the stern of the Gate Boat, flying flag G, which closely follows the Pathfinder, which sails close-hauled on a port tack away from the Committee Boat, 'opening' the start line, or 'Gate'

This gate must be crossed by all participants except the Pathfinder Boat, to start the race.

The sail number of the Pathfinder will be posted on the Committee Boat board and will be the boat finishing 5th or nearest 5th in ascending order if the 5th boat in the previous race has been pathfinder in a race already during the series.

Shortly before the start, the Pathfinder will position themselves so that they can pass the Pin (to port) sailing close hauled on port tack as the starting horn is sounded. They will be very closely followed by the Gate Boat for the period which has been posted on the course board on the Committee Boat, normally expected to be between 90 and 120 seconds, depending on weather conditions.

The size of the Gate should be sufficient for all boats to start properly. When the Gate is judged by the Race Officer to be fully open (i.e. after the time reflected on the course board), the Gate Boat stops, and the Pathfinder is allowed to continue to sail on whichever tack they wish. The Gate Boat alerts the Pathfinder and the fleet at this moment by sounding a single horn signal.

Any boat judged to have hampered the Pathfinder Boat during the start, will be disqualified or must retire.

Any boat judged to have hampered the Gate Boat during the start, must complete a penalty as per SI 15.1.

The Gate Boat will remain on station following full opening of the Gate for not less than 2 minutes after which, any boats which have been unable to cross the Gate, will be judged DNS. Note 12.5 below

When all participants except the Pathfinder have crossed the Gate, the Gate Boat is no longer required and may resume duties as a Patrol Boat.

- 12.4 If any part of a boat's hull is on the course side of the starting line at her starting signal for line starts and or to windward of the Pathfinder on Gate starts and she is identified, the race committee will attempt to hail her sail number. Failure to hail her number, failure of her to hear such a hail, or the order in which boats are hailed will not be grounds for a redress for request. This changes RRS 62.1(a).
- 12.5 A boat that does not start within 5 minutes after her starting signal will be scored Did Not Start without a hearing. This changes RRS A5.1 and A5.2.

13 CHANGE OF THE NEXT LEG OF THE COURSE

- 13.1 To change the next leg of the course, the race committee will move the original mark or the finishing line to a new position
- 13.2 Minor course changes (up to 150m) may not be signalled. This changes RRS 33.

THE FINISH

- 14.1 The finishing line is between the committee boat staff displaying a blue flag and a Pin marker displaying either a blue flag or a RSWSC flag. The finish line will either be set near the windward mark or near the leeward mark positions. This changes RRS 32.2.
- 14.2 Alternative Finishing Line / W Flag. The RC may give a finishing place to any boat that is still racing by displaying W Flag to her from an official vessel (which may be in motion) with two sounds. A boat's finishing place in these circumstances will be the place she would have received had she sailed the course and finished within any time limit, without gaining or losing any place.

15 PENALTY SYSTEM

- 15.1 Penalties will be in accordance with RRS 44 excluding 44.3. This changes RRS 44.

16 TIME LIMITS [AND TARGET TIMES]

16.1 The Mark 1 Time Limit, Race Time Limit (see RRS 35), and the Finishing Window are shown in the table below.

Mark 1 Time Limit	Race Target Time	Finishing Window
20 Mins	45 Minutes	20 Minutes

16.2 If no boat has passed the first mark within the Mark 1 Time Limit, the race will be abandoned.

16.3 The Finishing Window is the time for boats to finish after the first boat sails the course and finishes. Boats failing to finish within the Finishing Window, and not subsequently retiring, penalized or given redress, will be scored at their position on the COURSE without a hearing, SI 14.2. This changes RRS 35, A4 and A5

16.4 Failure to meet the Target Time will not be grounds for redress. This changes RRS 62.1(a).

17 HEARING REQUESTS

17.1 The protest time limit is 60 minutes after the Committee Boat returns to the RSWSC Pontoon or, the race committee signals no more racing today when ashore, whichever is the later. The time will be posted on the official notice board.

17.2 Hearing request forms are available from the race office.

17.3 Notices will be posted no later than 30 minutes after the protest time limit to inform competitors of hearings in which they are parties or named as witnesses. Hearings will be held in the protest room, located at RSWSC beginning at the time posted.

18 SCORING

18.1 The scoring system is as follows:

18.2 3 races are required to be completed to constitute a series.

18.3 RRS A2.1 Series Scores is changed to read as follows:

(a) When fewer than 4 races have been completed, a boat's series score is the total of her race scores.

(b) When from 4 to 7 races have been completed, a boat's series score is the total of her race scores excluding her worst score.

(c) When 8 races have been completed, a boat's series score is the total of her race scores excluding her worst TWO scores.

19 SAFETY REGULATIONS

19.1 A boat that retires from a race shall notify the race committee or a safety boat at the first reasonable opportunity.

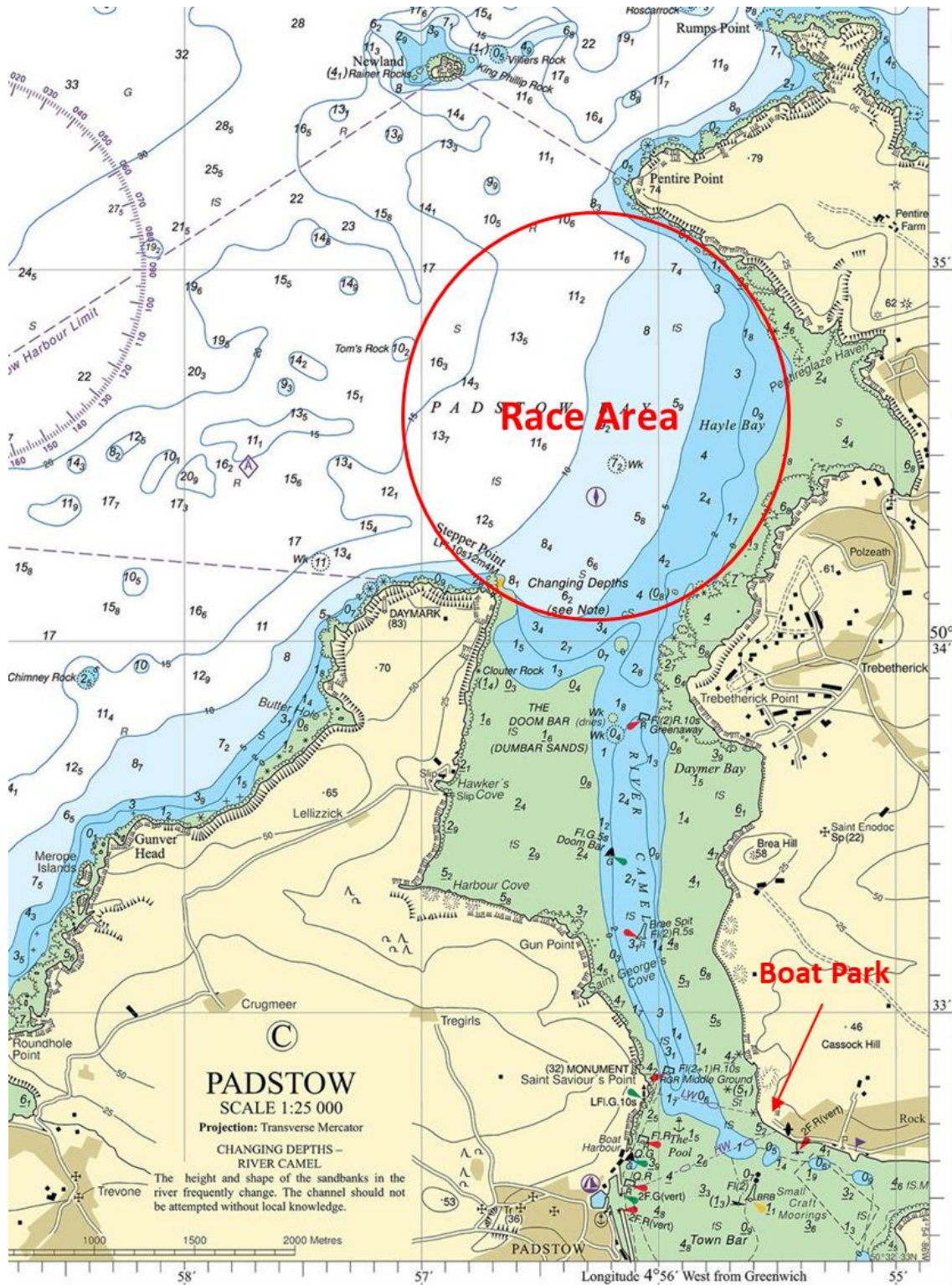
- 19.2 Boats are not required to sign on but ARE required to SIGN OFF, within 30 minutes of reaching the shore, in the Crew Room at RSWSC.
- 19.3 The race committee may protest a boat for a breach of these safety regulations.
- 20 REPLACEMENT OF CREW OR EQUIPMENT
- 20.1 Substitution of competitors is not allowed without prior written approval of the Race Committee. Requests should be made in writing and submitted to the Race Office
- 21 EQUIPMENT AND MEASUREMENT CHECKS
- 21.1 A boat or equipment may be inspected at any time for compliance with the class rules, notice of race and sailing instructions.
- 22 SUPPORT TEAMS
- 22.1 Support teams, including all support persons and support person vessels, shall make themselves know to the RC at Registration
- 22.2 Team leaders, coaches and other support persons shall stay outside areas where boats are racing from the time of the preparatory signal for the first start until all boats have finished or retired or the race committee signals a postponement, general recall or abandonment.
- 25 BERTHING
- 25.1 Boats shall be kept in the spaces shown on Ferry Point.
- 26 PRIZES
- 26.1 There will be a daily prizegiving in the evening at RSWSC at 18:30 or as otherwise notified.
- 26.2 The event prize giving will be held as soon as possible after the completion of racing on Tuesday 23rd July in the main bar, RSWSC.
- 26.3 Prizes will be awarded for both the UK Nationals and UK Open events.
- 26.4 Prizes for the National Championship are listed in SI Addendum 3 will be awarded at the sole discretion of the UKFA and OA and not all prizes may be awarded.
- 27 RISK STATEMENT
- 27.1 RRS 3 states: 'The responsibility for a boat's decision to participate in a race or to continue to race is hers alone.' By participating in this event each competitor agrees and acknowledges that sailing is a potentially dangerous activity with inherent risks. These risks include strong winds and rough seas, sudden changes in weather, failure of equipment, boat handling errors, poor seamanship by other boats, loss of balance on an unstable platform and fatigue resulting in increased risk of injury.

Inherent in the sport of sailing is the risk of permanent, catastrophic injury or death by drowning, trauma, hypothermia or other causes.

28 INSURANCE

- 30.1 Each participating boat shall be insured with valid third-party liability insurance with a minimum cover of £3,000,000 per incident or the equivalent.

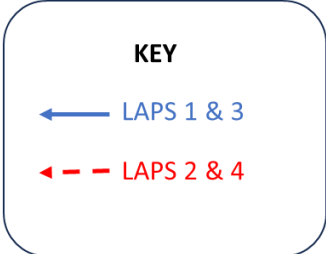
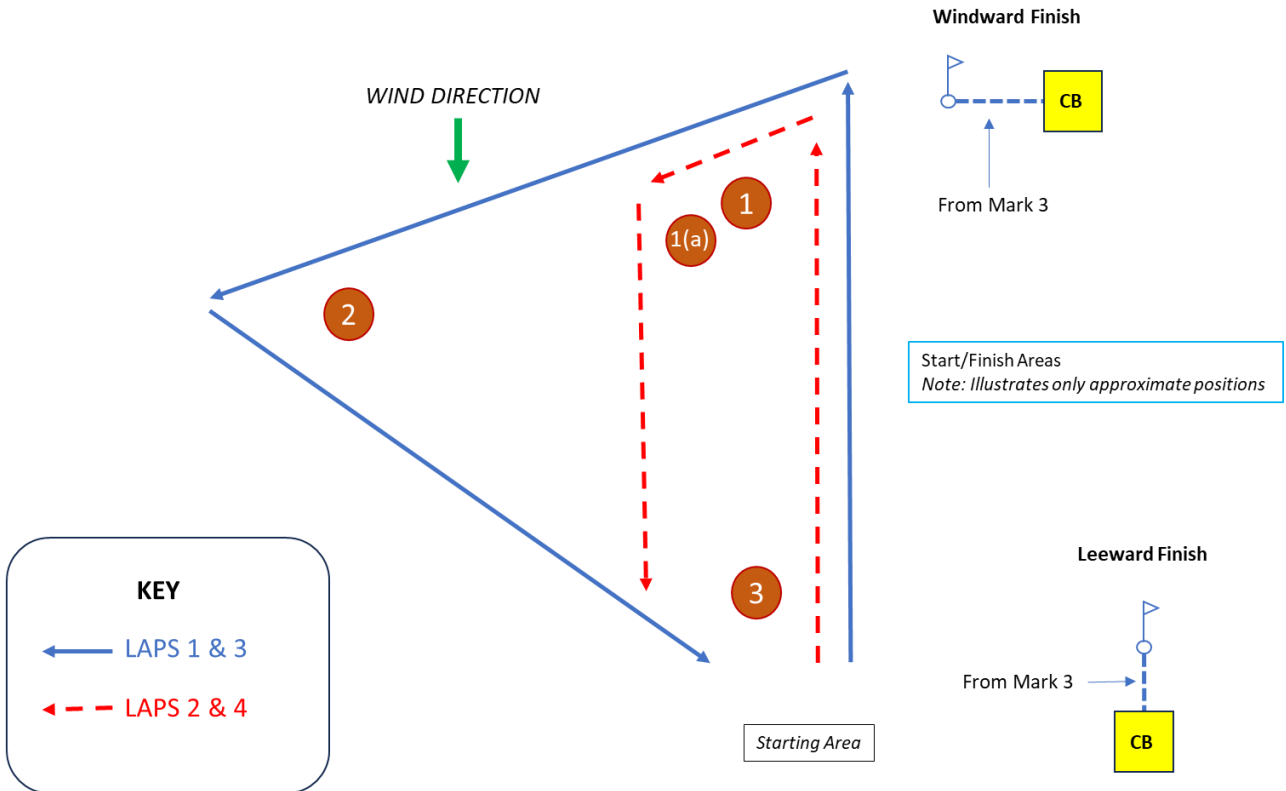
SI Addendum 1



SI Addendum 2

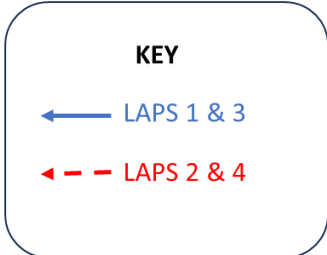
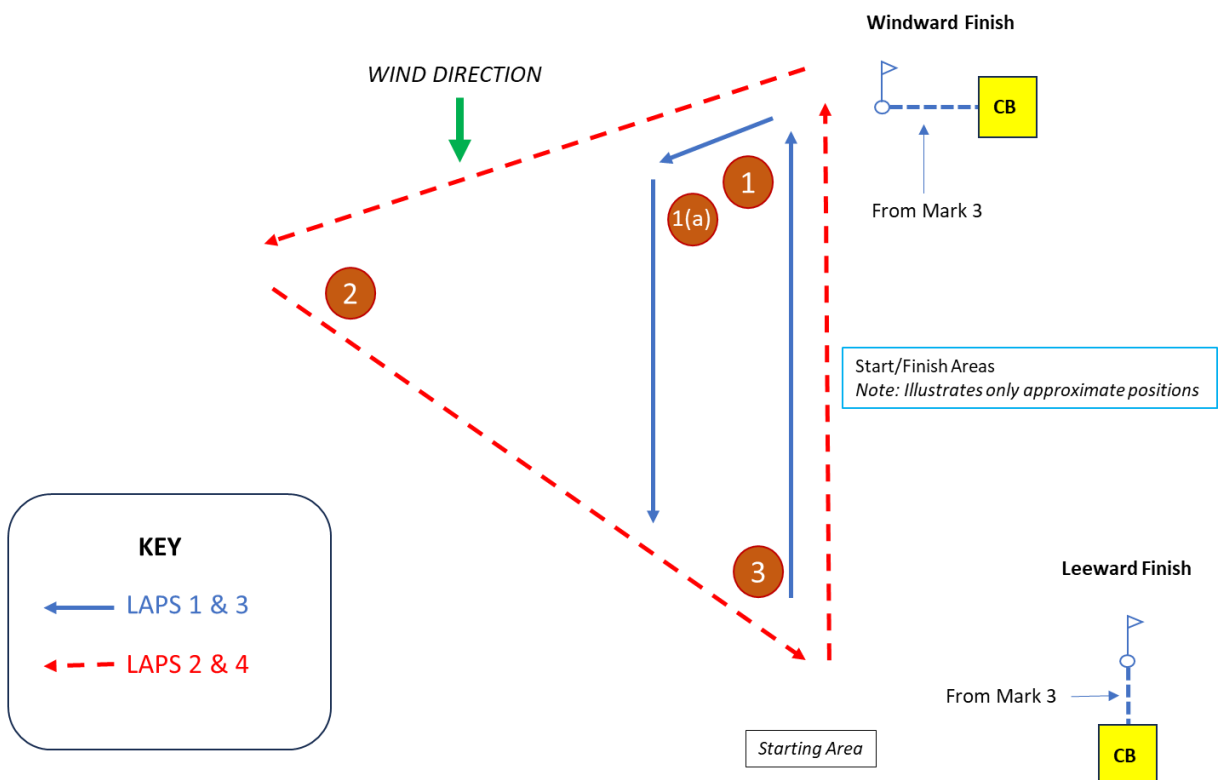
COURSE 1 (TRIANGLE/SAUSAGE)

Course: Start, 1(p), 2(p), 3(p), 1(p), 1a(p), 3(p), 1(p), 2(p), 3(p), 1(p), 1a(p), 3(p), Finish Line



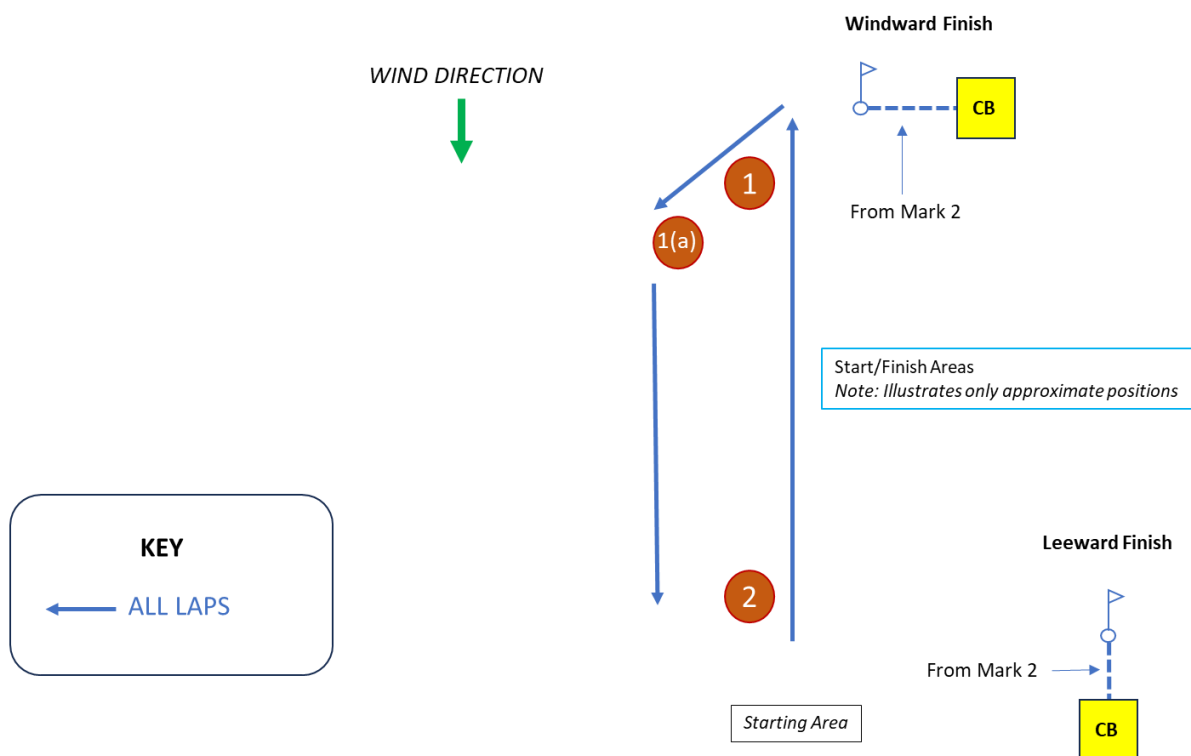
COURSE 2 (SAUSAGE/TRIANGLE)

Course: Start, 1(p), 1a(p), 3(p), 1(p), 2(p), 3(p), 1(p), 1a(p), 2(p), 1(p), 2(p), 3(p), Finish Line



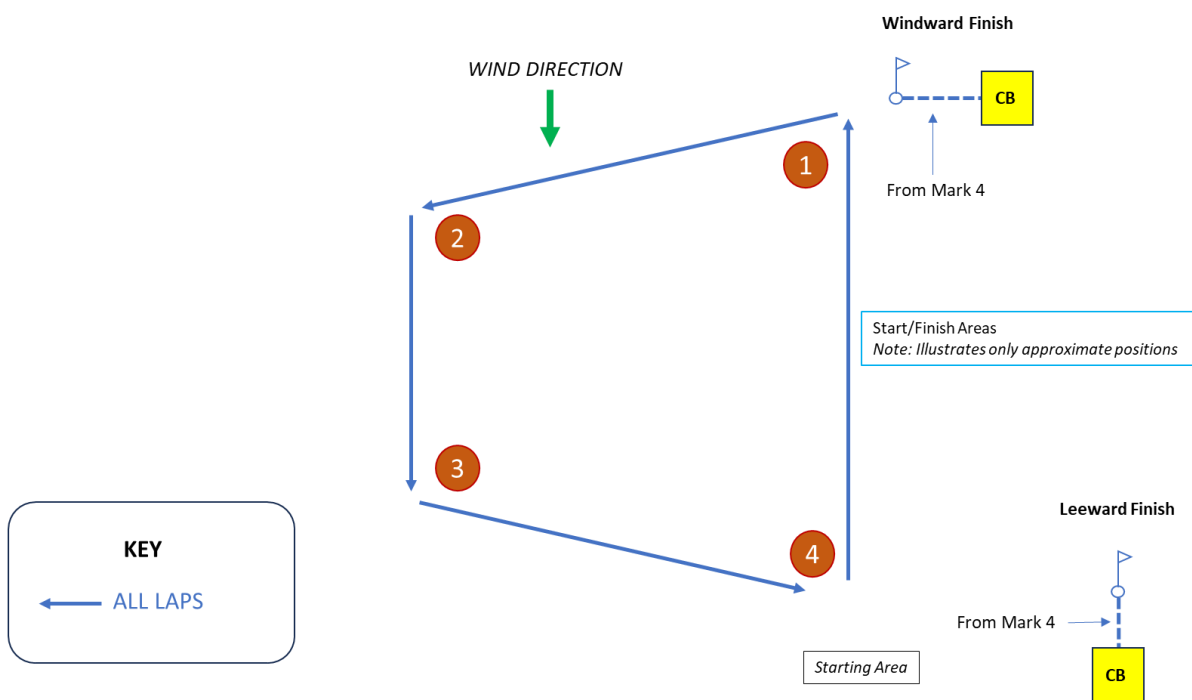
COURSE 3 (Winward/Leward)

Course: Start, 1(p), 1(a)(p), 2(p), 1(p), 1(a)(p), 2(p), 1(p), 1(a)(p), 2(p), 1(p), 1(a)(p), 2(p), Finish Line



COURSE 4 (TRAPEZOIDAL)

Course: Start, 1(p), 2(p), 3(p), 4(p), 1(p), 2(p), 3(p), 4(p), 1(p), 2(p), 3(p), 4(p), 1(p), 2(p), 3(p), 4(p), Finish Line



SI Addendum 3

TROPHIES

Trophy Name	Awarded for ...
Shackleton painting	Winner of the Nationals
Access Trophy	Winning helm
City of Plymouth Trophy	Winning crew
Norris Brothers Trophy	Race 1 Winners
The Urban District Council of Hunstanton Plate	Race 2 Winners
Chippendale Hull Trophy	Race 3 Winners
Contac 400 Trophy	Race 4 Winners
Hyde Sails Trophy	Race 5 Winners
Peter Milne Trophy	Race 6 Winners
Yachts & Yachting Trophy	Race 7 Winners
Anya Charlotte Horey Trophy	Race 8 Winners
U26 Helm Trophy	1st U26 Helm
U26 Crew Trophy	1st U26 Crew
1st all U26 boat	U26 National Champions
	U26 sailor who has exhibited enthusiasm and general joie de vivre that was associated with Toby
Toby Hamer Trophy	
RBS Rose Bowl	1st Lady Helm
1st Lady Crew Trophy	1st Lady Crew
Master Helm Trophy	1st helm > 50
Master Crew Trophy	1st crew > 50
Grandmaster Helm Trophy	1st helm > 60
Grandmaster Crew Trophy	1st crew > 60
	Most improved team (from the previous Nationals)
McLaughlin Southworth Trophy	
Classic Boat	Highest placed Classic Fireball
Perseverance	Lowest placed boat to complete all races